

PRMT5 antibody [N3C3]

Cat. No. GTX115409

Host	Rabbit
Clonality	Polyclonal
Isotype	IgG
Application	WB, ICC/IF, IHC-P
Reactivity	Human, Mouse

Package
100 µl, 25 µl

APPLICATION

Application Note

*Optimal dilutions/concentrations should be determined by the researcher.

Suggested dilution	Recommended dilution
WB	1:500-1:3000
ICC/IF	1:100-1:1000
IHC-P	1:100-1:1000

Not tested in other applications.

Calculated MW 73 kDa. ([Note](#))

PROPERTIES

Form	Liquid
Buffer	PBS, 1% BSA, 20% Glycerol
Preservative	0.025% ProClin 300
Storage	Store as concentrated solution. Centrifuge briefly prior to opening vial. For short-term storage (1-2 weeks), store at 4°C. For long-term storage, aliquot and store at -20°C or below. Avoid multiple freeze-thaw cycles.
Concentration	0.31 mg/ml (Please refer to the vial label for the specific concentration.)
Immunogen	Recombinant protein encompassing a sequence within the center region of human PRMT5. The exact sequence is proprietary.
Purification	Purified by antigen-affinity chromatography.
Conjugation	Unconjugated

Note

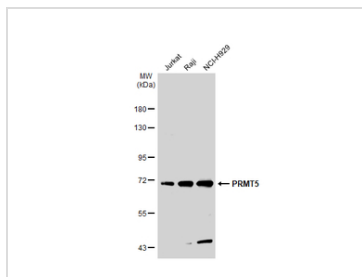
For laboratory research use only. Not for any clinical, therapeutic, or diagnostic use in humans or animals. Not for animal or human consumption.

Purchasers shall not, and agree not to enable third parties to, analyze, copy, reverse engineer or otherwise attempt to determine the structure or sequence of the product.



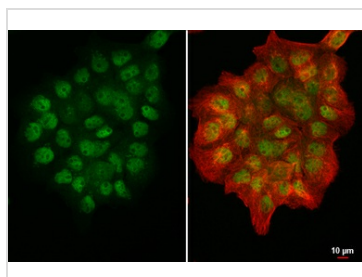
For full product information, images and publications, please visit our [website](#).

DATA IMAGES



GTx115409 WB Image

Various whole cell extracts (30 µg) were separated by 7.5% SDS-PAGE, and the membrane was blotted with PRMT5 antibody [N3C3] (GTx115409) diluted at 1:1000. The HRP-conjugated anti-rabbit IgG antibody (GTx213110-01) was used to detect the primary antibody.



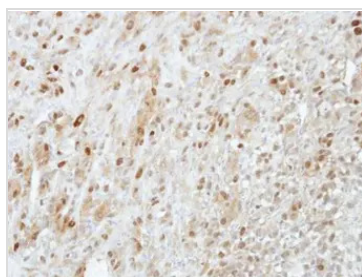
GTx115409 ICC/IF Image

PRMT5 antibody [N3C3] detects PRMT5 protein at nucleus by immunofluorescent analysis.

Sample: A431 cells were fixed in 4% paraformaldehyde at RT for 15 min.

Green: PRMT5 stained by PRMT5 antibody [N3C3] (GTx115409) diluted at 1:500.

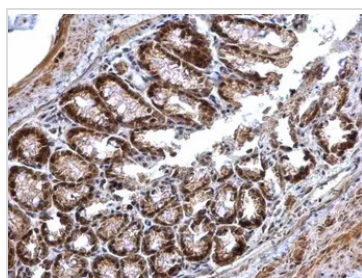
Red: alpha Tubulin, a cytoskeleton marker, stained by alpha Tubulin antibody [GT114] (GTx628802) diluted at 1:1000.



GTx115409 IHC-P Image

Immunohistochemical analysis of paraffin-embedded Mahlavu xenograft, using PRMT5(GTx115409) antibody at 1:100 dilution.

Antigen Retrieval: Trilogy™ (EDTA based, pH 8.0) buffer, 15min



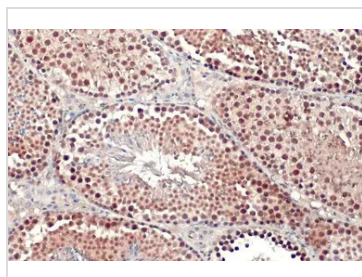
GTx115409 IHC-P Image

PRMT5 antibody [N3C3] detects PRMT5 protein at cytosol and nucleus on mouse colon by immunohistochemical analysis.

Sample: Paraffin-embedded mouse colon.

PRMT5 antibody [N3C3] (GTx115409) dilution: 1:500.

Antigen Retrieval: Trilogy™ (EDTA based, pH 8.0) buffer, 15min



GTx115409 IHC-P Image

PRMT5 antibody [N3C3] detects PRMT5 protein at cytoplasm and nucleus by immunohistochemical analysis.

Sample: Paraffin-embedded mouse testis.

PRMT5 stained by PRMT5 antibody [N3C3] (GTx115409) diluted at 1:2500.

Antigen Retrieval: Citrate buffer, pH 6.0, 15 min



For full product information, images and publications, please visit our [website](https://www.genetex.com).