

ACAA2 antibody

Cat. No. GTX115417

Host	Rabbit
Clonality	Polyclonal
Isotype	IgG
Applications	WB, ICC/IF, IHC-P
Reactivity	Human, Mouse

References (5)

Package

100 µl, 25 µl

Applications

Application Note

*Optimal dilutions/concentrations should be determined by the researcher.

Suggested dilution	Recommended dilution
WB	1:500-1:3000
ICC/IF	1:100-1:1000
IHC-P	1:100-1:1000

Not tested in other applications.

Calculated MW 42 kDa. ([Note](#))

Properties

Form	Liquid
Buffer	0.1M Tris, 0.1M Glycine, 20% Glycerol
Preservative	0.01% Thimerosal
Storage	Store as concentrated solution. Centrifuge briefly prior to opening vial. For short-term storage (1-2 weeks), store at 4°C. For long-term storage, aliquot and store at -20°C or below. Avoid multiple freeze-thaw cycles.
Concentration	1.01 mg/ml (Please refer to the vial label for the specific concentration.)
Immunogen	Recombinant protein encompassing a sequence within the center region of human ACAA2. The exact sequence is proprietary.
Purification	Purified by antigen-affinity chromatography.
Conjugation	Unconjugated

Note

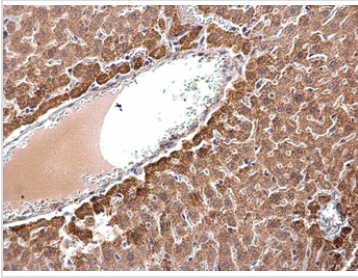
For laboratory research use only. Not for any clinical, therapeutic, or diagnostic use in humans or animals. Not for animal or human consumption.

Purchasers shall not, and agree not to enable third parties to, analyze, copy, reverse engineer or otherwise attempt to determine the structure or sequence of the product.



For full product information, images and publications, please visit our [website](#).

DATA IMAGES



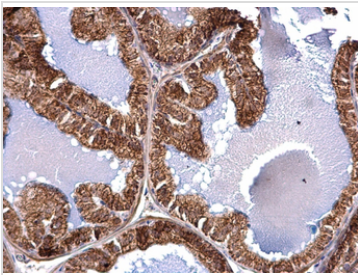
GTX115417 IHC-P Image

ACAA2 antibody detects ACAA2 protein at mitochondria on mouse prostate by immunohistochemical analysis.

Sample: Paraffin-embedded mouse prostate.

ACAA2 antibody (GTX115417) dilution: 1:1000.

Antigen Retrieval: Trilogy™ (EDTA based, pH 8.0) buffer, 15min



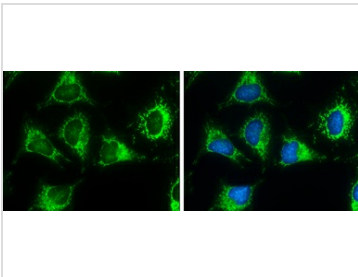
GTX115417 IHC-P Image

ACAA2 antibody detects ACAA2 protein at mitochondria on mouse prostate by immunohistochemical analysis.

Sample: Paraffin-embedded mouse prostate.

ACAA2 antibody (GTX115417) dilution: 1:1000.

Antigen Retrieval: Trilogy™ (EDTA based, pH 8.0) buffer, 15min



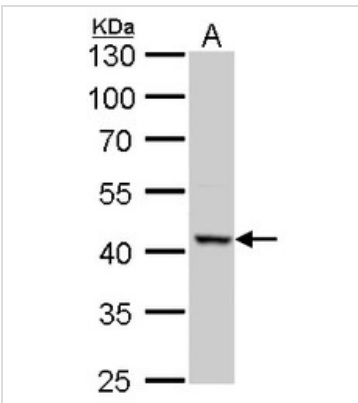
GTX115417 ICC/IF Image

ACAA2 antibody detects ACAA2 protein at mitochondria by immunofluorescent analysis.

Sample: HeLa cells were fixed in ice-cold MeOH for 5 min.

Green: ACAA2 protein stained by ACAA2 antibody (GTX115417) diluted at 1:500.

Blue: Hoechst 33342 staining.



GTX115417 WB Image

ACAA2 antibody detects ACAA2 protein by Western blot analysis.

A. 30 µg HeLa whole cell lysate/extract

10 % SDS-PAGE

ACAA2 antibody (GTX115417) dilution: 1:1000



For full product information, images and publications, please visit our [website](http://www.genetex.com).