

CPSF6 antibody

Cat. No. GTX115537

Host	Rabbit
Clonality	Polyclonal
Isotype	IgG
Applications	WB, ICC/IF, IHC-P
Reactivity	Human, Mouse, Rat

Package
100 µl, 25 µl

Applications

Application Note

*Optimal dilutions/concentrations should be determined by the researcher.

Suggested dilution	Recommended dilution
WB	1:1000-1:10000
ICC/IF	1:100-1:1000
IHC-P	1:100-1:1000

Not tested in other applications.

Calculated MW 59 kDa. ([Note](#))

Properties

Form	Liquid
Buffer	PBS, 20% Glycerol
Preservative	0.01% Thimerosal
Storage	Store as concentrated solution. Centrifuge briefly prior to opening vial. For short-term storage (1-2 weeks), store at 4°C. For long-term storage, aliquot and store at -20°C or below. Avoid multiple freeze-thaw cycles.
Concentration	1 mg/ml (Please refer to the vial label for the specific concentration.)
Immunogen	Recombinant protein encompassing a sequence within the N-terminus region of human CPSF6. The exact sequence is proprietary.
Purification	Purified by antigen-affinity chromatography.
Conjugation	Unconjugated

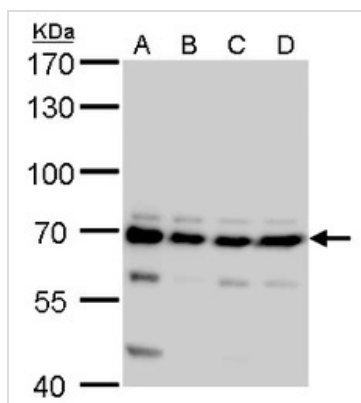
Note

For laboratory research use only. Not for any clinical, therapeutic, or diagnostic use in humans or animals. Not for animal or human consumption.

Purchasers shall not, and agree not to enable third parties to, analyze, copy, reverse engineer or otherwise attempt to determine the structure or sequence of the product.



For full product information, images and publications, please visit our [website](#).

DATA IMAGES

GTX115537 WB Image

CPSF6 antibody detects CPSF6 protein by Western blot analysis.

A. 30 µg 293T

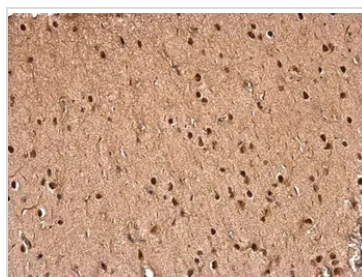
B. 30 µg A431

C. 30 µg HeLa

D. 30 µg HepG2

7.5 % SDS-PAGE

CPSF6 antibody (GTX115537) dilution: 1:5000

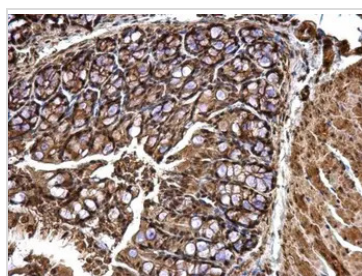

GTX115537 IHC-P Image

CPSF6 antibody detects CPSF6 protein at nucleus on rat hind brain by immunohistochemical analysis.

Sample: Paraffin-embedded rat hind brain.

CPSF6 antibody (GTX115537) dilution: 1:500.

Antigen Retrieval: Trilogy™ (EDTA based, pH 8.0) buffer, 15min

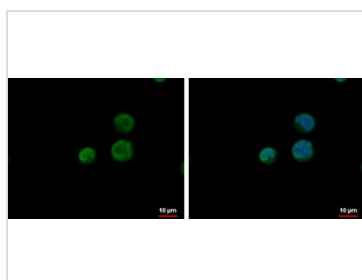

GTX115537 IHC-P Image

CPSF6 antibody detects CPSF6 protein at nucleus on mouse colon by immunohistochemical analysis.

Sample: Paraffin-embedded mouse colon.

CPSF6 antibody (GTX115537) dilution: 1:500.

Antigen Retrieval: Trilogy™ (EDTA based, pH 8.0) buffer, 15min


GTX115537 ICC/IF Image

CPSF6 antibody detects CPSF6 protein at nucleus by immunofluorescent analysis.

Sample: Jurkat cells were fixed in 4% paraformaldehyde at RT for 15 min.

Green: CPSF6 protein stained by CPSF6 antibody (GTX115537) diluted at 1:500.

Blue: Hoechst 33342 staining.



For full product information, images and publications, please visit our [website](https://www.genetex.com).