

## RbAp48 antibody [N3C3]

Cat. No. GTX115555

|              |                           |
|--------------|---------------------------|
| Host         | Rabbit                    |
| Clonality    | Polyclonal                |
| Isotype      | IgG                       |
| Applications | WB, ICC/IF, IHC-P, IHC-Wm |
| Reactivity   | Human, Zebrafish          |

Package  
100 µl, 25 µl

## Applications

## Application Note

\*Optimal dilutions/concentrations should be determined by the researcher.

| Suggested dilution | Recommended dilution |
|--------------------|----------------------|
| WB                 | 1:500-1:10000        |
| ICC/IF             | 1:100-1:1000         |
| IHC-P              | 1:100-1:1000         |
| IHC-Wm             | Assay dependent      |

Not tested in other applications.

Calculated MW 48 kDa. ( [Note](#) )

## Properties

|               |  |
|---------------|--|
| Form          | Liquid   |
| Buffer        | 0.1M Tris, 0.1M Glycine, 20% Glycerol  |
| Preservative  | 0.01% Thimerosal   |
| Storage       | Store as concentrated solution. Centrifuge briefly prior to opening vial. For short-term storage (1-2 weeks), store at 4°C. For long-term storage, aliquot and store at -20°C or below. Avoid multiple freeze-thaw cycles. |
| Concentration | 0.65 mg/ml (Please refer to the vial label for the specific concentration.)  |
| Immunogen     | Recombinant protein encompassing a sequence within the center region of human RbAp48. The exact sequence is proprietary.   |
| Purification  | Purified by antigen-affinity chromatography.   |
| Conjugation   | Unconjugated   |



For full product information, images and publications, please visit our [website](#).

For laboratory research use only. Not for any clinical, therapeutic, or diagnostic use in humans or animals. Not for animal or human consumption.

## Note

Purchasers shall not, and agree not to enable third parties to, analyze, copy, reverse engineer or otherwise attempt to determine the structure or sequence of the product.

## DATA IMAGES

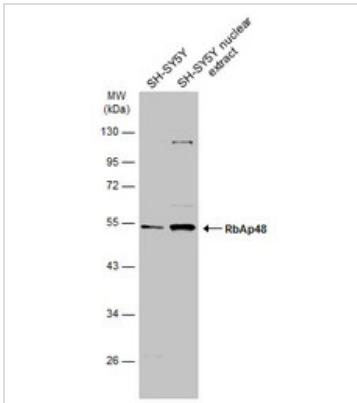


### GTX115555 IHC-Wm Image

RbAp48 antibody [N3C3] detects RbAp48 protein on whole-mount zebrafish embryos by immunohistochemical analysis.

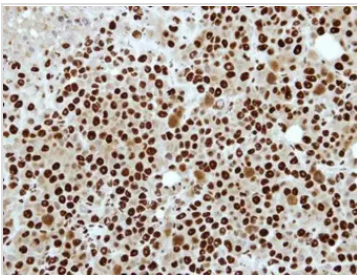
Sample: Paraformaldehyde-fixed zebrafish embryos.

RbAp48 antibody [N3C3] (GTX115555) dilution: 1:200.



### GTX115555 WB Image

SH-SY5Y whole cell and nuclear extracts (30 µg) were separated by 10% SDS-PAGE, and the membrane was blotted with RbAp48 antibody [N3C3] (GTX115555) diluted at 1:1000. The HRP-conjugated anti-rabbit IgG antibody (GTX213110-01) was used to detect the primary antibody.



### GTX115555 IHC-P Image

Immunohistochemical analysis of paraffin-embedded MDAMB231 xenograft, using RbAp48(GTX115555) antibody at 1:500 dilution.

Antigen Retrieval: Citrate buffer, pH 6.0, 15 min



For full product information, images and publications, please visit our [website](https://www.genetex.com).