

## Laminin antibody [LAM-89]

Cat. No. GTX11574

Host	Mouse
Clonality	Monoclonal
Isotype	IgG1
Applications	WB, IHC-P, ELISA, IHC
Reactivity	Human, Cat, Pig

References ( 3 )

Package

200 µl

## Applications

## Application Note

\*Optimal dilutions/concentrations should be determined by the researcher.

Suggested dilution	Recommended dilution
WB	Assay dependent
IHC-P	1:1,000
ELISA	Assay dependent
IHC	Assay dependent

Not tested in other applications.

## Properties

Form	Liquid
Buffer	Ascites
Preservative	15mM Sodium azide
Storage	Store as concentrated solution. Centrifuge briefly prior to opening vial. For short-term storage (1-2 weeks), store at 4°C. For long-term storage, aliquot and store at -20°C or below. Avoid multiple freeze-thaw cycles.
Immunogen	human laminin.
Purification	Unpurified
Conjugation	Unconjugated

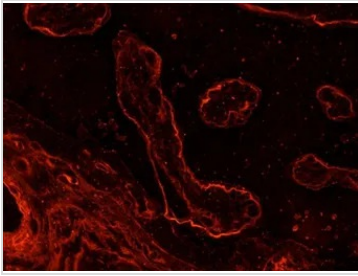
## Note

For laboratory research use only. Not for any clinical, therapeutic, or diagnostic use in humans or animals. Not for animal or human consumption.

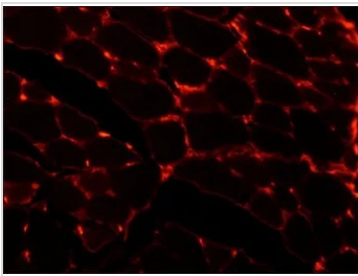
Purchasers shall not, and agree not to enable third parties to, analyze, copy, reverse engineer or otherwise attempt to determine the structure or sequence of the product.



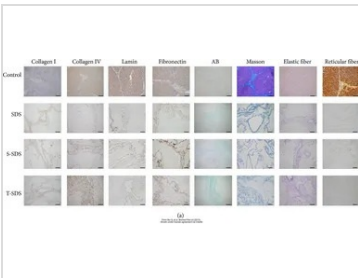
For full product information, images and publications, please visit our [website](#).

**DATA IMAGES**

**GTX11574 IHC-P Image**

IHC-P analysis of human placenta sections (enzyme-treated) using GTX11574 Laminin antibody [LAM-89] at 1:2,000.


**GTX11574 IHC-P Image**

IHC-P analysis of human tongue tissue (enzyme-treated) using GTX11574 Laminin antibody [LAM-89] at 1:2,000.


**GTX11574 IHC-P Image**

The data was published in the journal Biomed Res Int in 2015. [PMID: 25918720](https://pubmed.ncbi.nlm.nih.gov/25918720/)



For full product information, images and publications, please visit our [website](https://www.genetex.com).