

TRIM29 antibody [C1C3]

Cat. No. GTX115749

Host	Rabbit
Clonality	Polyclonal
Isotype	IgG
Applications	WB, IHC-P, IP
Reactivity	Human, Mouse

References (3)

Package

100 µl, 25 µl

Applications

Application Note

*Optimal dilutions/concentrations should be determined by the researcher.

Suggested dilution	Recommended dilution
WB	1:500-1:3000
IHC-P	1:100-1:1000
IP	1:100-1:500

Not tested in other applications.

Calculated MW 66 kDa. ([Note](#))

Properties

Form	Liquid
Buffer	0.1M Tris, 0.1M Glycine, 20% Glycerol
Preservative	0.01% Thimerosal
Storage	Store as concentrated solution. Centrifuge briefly prior to opening vial. For short-term storage (1-2 weeks), store at 4°C. For long-term storage, aliquot and store at -20°C or below. Avoid multiple freeze-thaw cycles.
Concentration	0.99 mg/ml (Please refer to the vial label for the specific concentration.)
Immunogen	Recombinant protein encompassing a sequence within the center region of human TRIM29. The exact sequence is proprietary.
Purification	Purified by antigen-affinity chromatography.
Conjugation	Unconjugated

Note

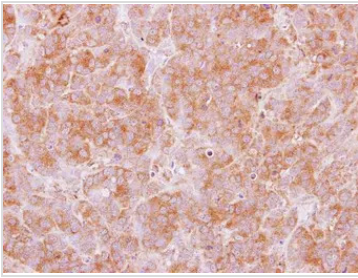
For laboratory research use only. Not for any clinical, therapeutic, or diagnostic use in humans or animals. Not for animal or human consumption.

Purchasers shall not, and agree not to enable third parties to, analyze, copy, reverse engineer or otherwise attempt to determine the structure or sequence of the product.



For full product information, images and publications, please visit our [website](#).

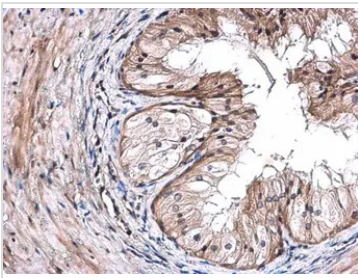
DATA IMAGES



GTX115749 IHC-P Image

Immunohistochemical analysis of paraffin-embedded MCF7 xenograft, using TRIM29(GTX115749) antibody at 1:100 dilution.

Antigen Retrieval: Citrate buffer, pH 6.0, 15 min



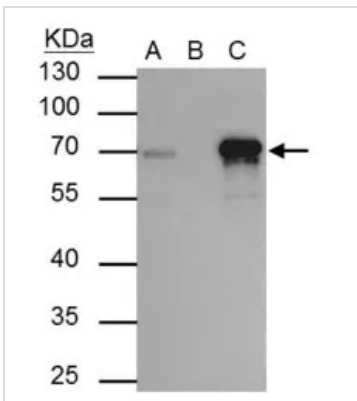
GTX115749 IHC-P Image

TRIM29 antibody [C1C3] detects TRIM29 protein at cytoplasm in mouse prostate by immunohistochemical analysis.

Sample: Paraffin-embedded mouse prostate.

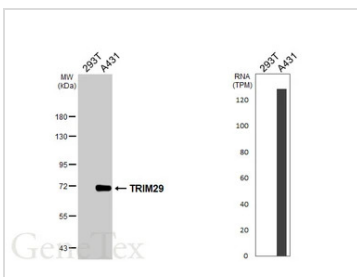
TRIM29 antibody [C1C3] (GTX115749) diluted at 1:500.

Antigen Retrieval: Citrate buffer, pH 6.0, 15 min



GTX115749 IP Image

TRIM29 antibody immunoprecipitates TRIM29 protein in IP experiments. IP Sample: A431 whole cell lysate/extract A : 30 µg whole cell lysate/extract of TRIM29 protein expressing A431 cells B : Control with 2.5 µg of pre-immune rabbit IgG C : Immunoprecipitation of TRIM29 by 2.5 µg of TRIM29 antibody (GTX115749) 10% SDS-PAGE The immunoprecipitated TRIM29 protein was detected by TRIM29 antibody (GTX115749) diluted at 1:2000. EasyBlot anti-rabbit IgG (HRP) (GTX221666-01) was used as a secondary reagent.



GTX115749 WB Image

Various whole cell extracts (30 µg) were separated by 7.5% SDS-PAGE, and the membrane was blotted with TRIM29 antibody [C1C3] (GTX115749) diluted at 1:1000. The HRP-conjugated anti-rabbit IgG antibody (GTX213110-01) was used to detect the primary antibody. Corresponding RNA expression data are based on Human Protein Atlas program.



For full product information, images and publications, please visit our [website](https://www.genetex.com).