

Aquaporin 5 antibody

Cat. No. GTX11586

Host	Rabbit
Clonality	Polyclonal
Isotype	IgG
Applications	WB, IHC-P
Reactivity	Mouse, Rat

References (3)

Package

100 µg

Applications

Application Note

*Optimal dilutions/concentrations should be determined by the researcher.

Suggested dilution	Recommended dilution
WB	0.1-0.5µg/ml
IHC-P	0.5-1µg/ml

Not tested in other applications.

Calculated MW 28 kDa. ([Note](#))

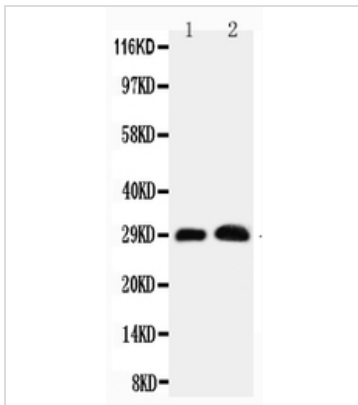
Properties

Form	Liquid
Buffer	0.1% Na ₂ HPO ₄ , 0.45% NaCl, 2.5% BSA
Preservative	0.025% Thimerosal, 0.025% Sodium azide
Storage	Store as concentrated solution. Centrifuge briefly prior to opening vial. For short-term storage (1-2 weeks), store at 4°C. For long-term storage, aliquot and store at -20°C or below. Avoid multiple freeze-thaw cycles.
Concentration	500 µg/ml (Please refer to the vial label for the specific concentration.)
Immunogen	A synthetic peptide corresponding to a sequence at the C-terminus of mouse AQP5(246-265aa EEDWEDHREERKKTIELTAH), identical to the related rat sequence.
Purification	Purified by antigen-affinity chromatography
Conjugation	Unconjugated
Note	For laboratory research use only. Not for any clinical, therapeutic, or diagnostic use in humans or animals. Not for animal or human consumption. Purchasers shall not, and agree not to enable third parties to, analyze, copy, reverse engineer or otherwise attempt to determine the structure or sequence of the product.



For full product information, images and publications, please visit our [website](#).

DATA IMAGES

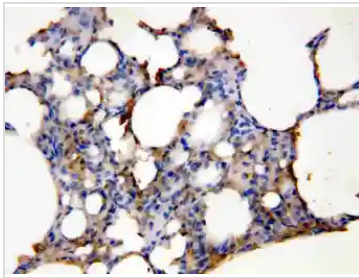
**GTX11586 WB Image**

WB analysis of various samples using GTX11586 Aquaporin 5 antibody.

Lane 1 : rat lung tissue lysate

Lane 2 : rat testis tissue lysate

Dilution : 0.5 µg/mL

**GTX11586 IHC-P Image**

IHC-P analysis of rat lung tissue using GTX11586 Aquaporin 5 antibody.

Dilution : 1µg/ml



For full product information, images and publications, please visit our [website](#).