

ANP32A antibody [N1C2]

Cat. No. GTX115933

Host	Rabbit
Clonality	Polyclonal
Isotype	IgG
Applications	WB, ICC/IF, IHC-P
Reactivity	Human, Mouse

Package
100 µl, 25 µl

Applications

Application Note

*Optimal dilutions/concentrations should be determined by the researcher.

Suggested dilution	Recommended dilution
WB	1:500-1:3000
ICC/IF	1:100-1:1000
IHC-P	1:100-1:1000

Not tested in other applications.

Calculated MW	29 kDa. (Note)
Product Note	Based on sequence homology, this antibody may cross react with ANP32B or ANP32C proteins.

Properties

Form	Liquid
Buffer	PBS, 1% BSA, 20% Glycerol
Preservative	0.01% Thimerosal
Storage	Store as concentrated solution. Centrifuge briefly prior to opening vial. For short-term storage (1-2 weeks), store at 4°C. For long-term storage, aliquot and store at -20°C or below. Avoid multiple freeze-thaw cycles.
Concentration	1 mg/ml (Please refer to the vial label for the specific concentration.)
Immunogen	Recombinant protein encompassing a sequence within the center region of human ANP32A. The exact sequence is proprietary.
Purification	Purified by antigen-affinity chromatography.
Conjugation	Unconjugated



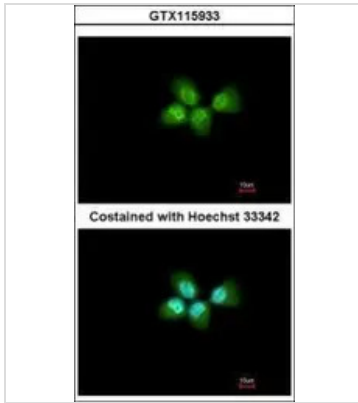
For full product information, images and publications, please visit our [website](#).

For laboratory research use only. Not for any clinical, therapeutic, or diagnostic use in humans or animals. Not for animal or human consumption.

Note

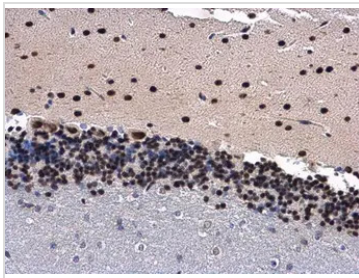
Purchasers shall not, and agree not to enable third parties to, analyze, copy, reverse engineer or otherwise attempt to determine the structure or sequence of the product.

DATA IMAGES



GTx115933 ICC/IF Image

Immunofluorescence analysis of paraformaldehyde-fixed A431, using ANP32A(GTx115933) antibody at 1:200 dilution.



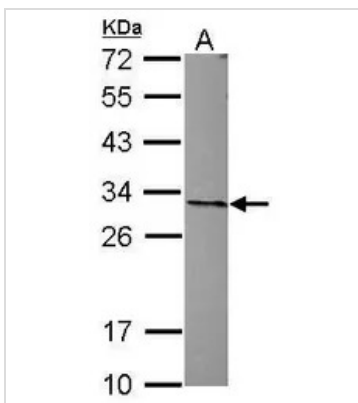
GTx115933 IHC-P Image

ANP32A antibody [N1C2] detects ANP32A protein at nucleus in mouse brain by immunohistochemical analysis.

Sample: Paraffin-embedded mouse brain.

ANP32A antibody [N1C2] (GTx115933) diluted at 1:500.

Antigen Retrieval: Citrate buffer, pH 6.0, 15 min



GTx115933 WB Image

Sample (30 ug of whole cell lysate)

A: Raji

12% SDS PAGE

GTx115933 diluted at 1:1000



For full product information, images and publications, please visit our [website](https://www.genetex.com).