

## Histone H2B antibody

Cat. No. GTX115955

Host	Rabbit
Clonality	Polyclonal
Isotype	IgG
Application	WB, ICC/IF, IHC-P
Reactivity	Human, Mouse, Zebrafish

Reference ( 1 )  
Package  
100 µl, 25 µl

## APPLICATION

## Application Note

\*Optimal dilutions/concentrations should be determined by the researcher.

Suggested dilution	Recommended dilution
WB	1:500-1:10000
ICC/IF	1:100-1:1000
IHC-P	1:100-1:1000

Not tested in other applications.

## PROPERTIES

Form	Liquid
Buffer	PBS, 1% BSA, 20% Glycerol
Preservative	0.01% Thimerosal
Storage	Store as concentrated solution. Centrifuge briefly prior to opening vial. For short-term storage (1-2 weeks), store at 4°C. For long-term storage, aliquot and store at -20°C or below. Avoid multiple freeze-thaw cycles.
Concentration	1 mg/ml (Please refer to the vial label for the specific concentration.)
Immunogen	Full length human Histone H2B Recombinant protein.
Purification	Purified by antigen-affinity chromatography.
Conjugation	Unconjugated

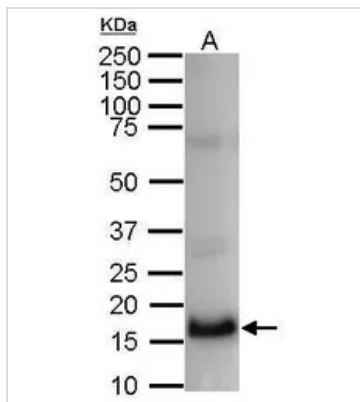
## Note

For laboratory research use only. Not for any clinical, therapeutic, or diagnostic use in humans or animals. Not for animal or human consumption.

Purchasers shall not, and agree not to enable third parties to, analyze, copy, reverse engineer or otherwise attempt to determine the structure or sequence of the product.



For full product information, images and publications, please visit our [website](#).

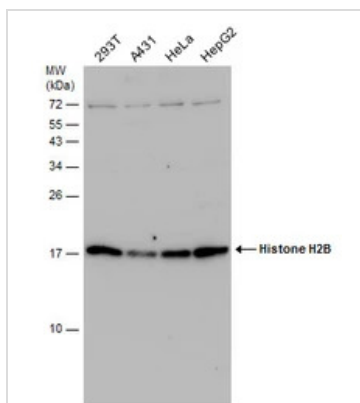
**DATA IMAGES**

**GTx115955 WB Image**

The equivalent of 4 larvae was loaded

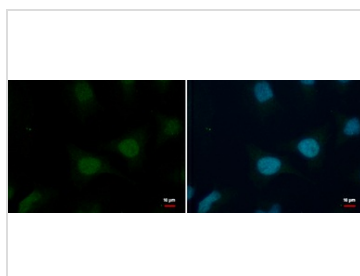
A: 120hpf larvae

4-12% NuPAGE Bis Tris precast gel

GTx115955 diluted at 1:1000


**GTx115955 WB Image**

Various whole cell extracts (30  $\mu$ g) were separated by 15% SDS-PAGE, and the membrane was blotted with Histone H2B antibody (GTx115955) diluted at 1:1000. The HRP-conjugated anti-rabbit IgG antibody (GTx213110-01) was used to detect the primary antibody.

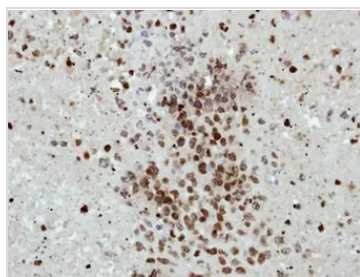

**GTx115955 ICC/IF Image**

Histone H2B antibody detects Histone H2B protein at nucleus by immunofluorescent analysis.

Sample: HeLa cells were fixed in 4% paraformaldehyde/PBS for 15 min.

Green: Histone H2B protein stained by Histone H2B antibody (GTx115955) diluted at 1:500.

Blue: Hoechst 33342 staining.


**GTx115955 IHC-P Image**

Immunohistochemical analysis of paraffin-embedded H1299 xenograft, using Histone H2B(GTx115955) antibody at 1:500 dilution.

Antigen Retrieval: Citrate buffer, pH 6.0, 15 min



For full product information, images and publications, please visit our [website](https://www.genetex.com).