

## PRMT5 antibody [N1N3]

Cat. No. GTX115994

Host	Rabbit
Clonality	Polyclonal
Isotype	IgG
Application	WB, ICC/IF, IHC-P
Reactivity	Human, Mouse

Package  
100 µl, 25 µl

## APPLICATION

## Application Note

\*Optimal dilutions/concentrations should be determined by the researcher.

Suggested dilution	Recommended dilution
WB	1:500-1:3000
ICC/IF	1:100-1:1000
IHC-P	1:100-1:1000

Not tested in other applications.

Calculated MW 73 kDa. ( [Note](#) )

## PROPERTIES

Form	Liquid
Buffer	0.1M Tris, 0.1M Glycine, 20% Glycerol
Preservative	0.01% Thimerosal
Storage	Store as concentrated solution. Centrifuge briefly prior to opening vial. For short-term storage (1-2 weeks), store at 4°C. For long-term storage, aliquot and store at -20°C or below. Avoid multiple freeze-thaw cycles.
Concentration	0.52 mg/ml (Please refer to the vial label for the specific concentration.)
Immunogen	Recombinant protein encompassing a sequence within the N-terminus region of human PRMT5. The exact sequence is proprietary.
Purification	Purified by antigen-affinity chromatography.
Conjugation	Unconjugated

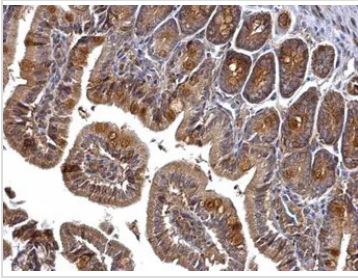
## Note

For laboratory research use only. Not for any clinical, therapeutic, or diagnostic use in humans or animals. Not for animal or human consumption.

Purchasers shall not, and agree not to enable third parties to, analyze, copy, reverse engineer or otherwise attempt to determine the structure or sequence of the product.



For full product information, images and publications, please visit our [website](#).

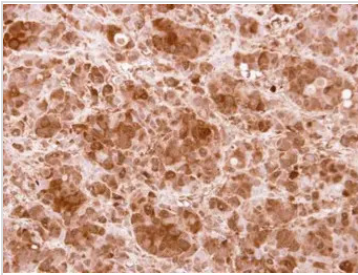
**DATA IMAGES**

**GTX115994 IHC-P Image**

PRMT5 antibody [N1N3] detects PRMT5 protein at cytosol on mouse intestine by immunohistochemical analysis.

Sample: Paraffin-embedded mouse intestine.

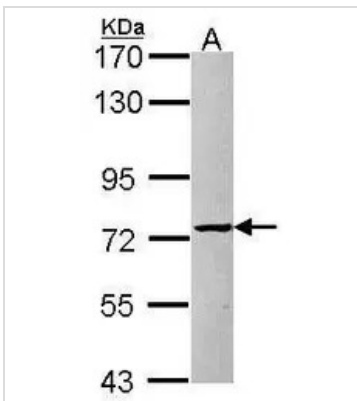
PRMT5 antibody [N1N3] (GTX115994) dilution: 1:500.

Antigen Retrieval: Trilogy™ (EDTA based, pH 8.0) buffer, 15min


**GTX115994 IHC-P Image**

Immunohistochemical analysis of paraffin-embedded MCF7 xenograft, using PRMT5(GTX115994) antibody at 1:100 dilution.

Antigen Retrieval: Trilogy™ (EDTA based, pH 8.0) buffer, 15min

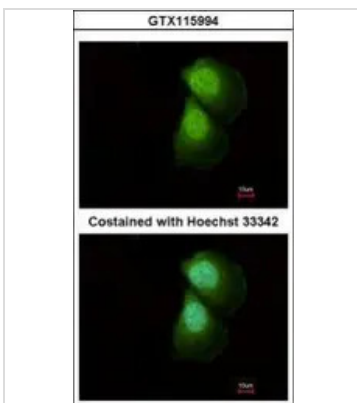

**GTX115994 WB Image**

Sample (30 ug of whole cell lysate)

A: Raji

7.5% SDS PAGE

GTX115994 diluted at 1:1000


**GTX115994 ICC/IF Image**

Immunofluorescence analysis of paraformaldehyde-fixed A431, using PRMT5(GTX115994) antibody at 1:500 dilution.



For full product information, images and publications, please visit our [website](https://www.genetex.com).