

## APC antibody [C3], C-term

**Cat. No. GTX116009**

<b>Host</b>	Rabbit
<b>Clonality</b>	Polyclonal
<b>Isotype</b>	IgG
<b>Applications</b>	WB, ICC/IF, IHC-P, IHC
<b>Reactivity</b>	Human, Mouse, Rat

References ( 3 )

★★★★★ Review ( 1 )

Package

100 µl, 25 µl

## Applications

**Application Note**

\*Optimal dilutions/concentrations should be determined by the researcher.

Suggested dilution	Recommended dilution
WB	1:500-1:3000
ICC/IF	1:100-1:1000
IHC-P	1:100-1:1000
IHC	Assay dependent

Not tested in other applications.

**Calculated MW** 312 kDa. ( [Note](#) )

## Properties

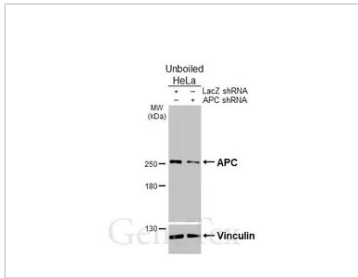
<b>Form</b>	Liquid
<b>Buffer</b>	PBS, 20% Glycerol
<b>Preservative</b>	0.025% ProClin 300
<b>Storage</b>	Store as concentrated solution. Centrifuge briefly prior to opening vial. For short-term storage (1-2 weeks), store at 4°C. For long-term storage, aliquot and store at -20°C or below. Avoid multiple freeze-thaw cycles.
<b>Concentration</b>	1.44 mg/ml (Please refer to the vial label for the specific concentration.)
<b>Immunogen</b>	Carrier-protein conjugated synthetic peptide encompassing a sequence of human APC. The exact sequence is proprietary.
<b>Purification</b>	Purified by antigen-affinity chromatography.
<b>Conjugation</b>	Unconjugated

**Note**

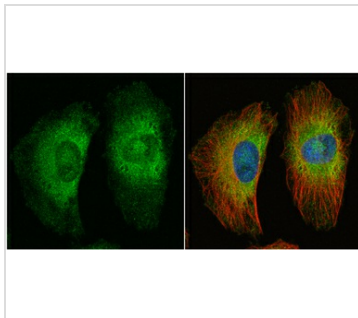
For laboratory research use only. Not for any clinical, therapeutic, or diagnostic use in humans or animals. Not for animal or human consumption.

Purchasers shall not, and agree not to enable third parties to, analyze, copy, reverse engineer or otherwise attempt to determine the structure or sequence of the product.

For full product information, images and publications, please visit our [website](#).

**DATA IMAGES**

**GTX116009 WB Image**

Non-transfected (–) and transfected (+) unboiled HeLa whole cell extracts (30 µg) were separated by 5% SDS-PAGE, and the membrane was blotted with APC antibody [C3], C-term (GTX116009) diluted at 1:1000. The HRP-conjugated anti-rabbit IgG antibody (GTX213110-01) was used to detect the primary antibody.


**GTX116009 ICC/IF Image**

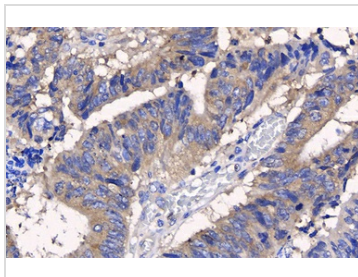
APC antibody [C3], C-term detects APC protein at cytoplasm by immunofluorescent analysis.

Sample: HeLa cells were fixed in 4% paraformaldehyde at RT for 15 min.

Green: APC protein stained by APC antibody [C3], C-term (GTX116009) diluted at 1:1000.

Red: alpha Tubulin, a cytoskeleton marker, stained by alpha Tubulin antibody [GT114] (GTX628802) diluted at 1:1000.

Blue: Hoechst 33342 staining.

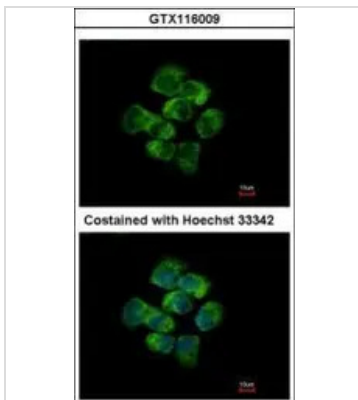

**GTX116009 IHC-P Image**

APC antibody [C3], C-term detects APC protein at cytoplasm by immunohistochemical analysis (Autostainer Formulated).

Sample: Paraffin-embedded human colon cancer.

APC stained by APC antibody [C3], C-term (GTX116009) diluted at 1:500.

Antigen Retrieval: Citrate buffer, 20 min


**GTX116009 ICC/IF Image**

Immunofluorescence analysis of methanol-fixed A431, using APC(GTX116009) antibody at 1:500 dilution.



For full product information, images and publications, please visit our [website](http://www.genetex.com).