

DNMT1 antibody [N1], N-term

Cat. No. GTX116011

Host	Rabbit
Clonality	Polyclonal
Isotype	IgG
Applications	WB, ICC/IF, IHC-P, IP, ChIP assay
Reactivity	Human, Mouse

References (33)

Package

100 µl, 25 µl

Applications

Application Note

*Optimal dilutions/concentrations should be determined by the researcher.

Suggested dilution	Recommended dilution
WB	1:1000-1:10000
ICC/IF	1:100-1:2000
IHC-P	1:100-1:1000
IP	1:100-1:500
ChIP assay	Assay dependent

Not tested in other applications.

Calculated MW 183 kDa. ([Note](#))

Properties

Form	Liquid
Buffer	PBS, 1% BSA, 20% Glycerol
Preservative	0.025% ProClin 300
Storage	Store as concentrated solution. Centrifuge briefly prior to opening vial. For short-term storage (1-2 weeks), store at 4°C. For long-term storage, aliquot and store at -20°C or below. Avoid multiple freeze-thaw cycles.
Concentration	0.18 mg/ml (Please refer to the vial label for the specific concentration.)
Immunogen	Carrier-protein conjugated synthetic peptide encompassing a sequence within the N-terminus region of human DNMT1. The exact sequence is proprietary.
Purification	Purified by antigen-affinity chromatography.
Conjugation	Unconjugated



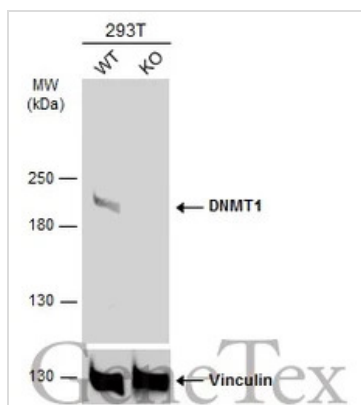
For full product information, images and publications, please visit our [website](#).

For laboratory research use only. Not for any clinical, therapeutic, or diagnostic use in humans or animals. Not for animal or human consumption.

Note

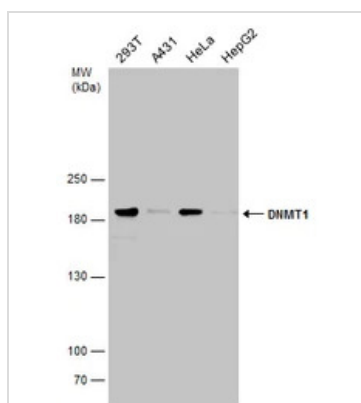
Purchasers shall not, and agree not to enable third parties to, analyze, copy, reverse engineer or otherwise attempt to determine the structure or sequence of the product.

DATA IMAGES



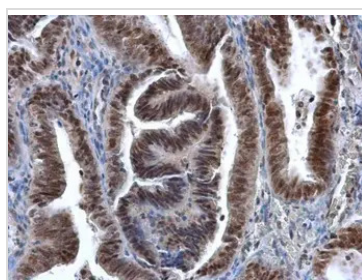
GTX116011 WB Image

Wild-type (WT) and DNMT1 knockout (KO) 293T cell extracts (30 µg) were separated by 5% SDS-PAGE, and the membrane was blotted with DNMT1 antibody [N1], N-term (GTX116011) diluted at 1:5000. The HRP-conjugated anti-rabbit IgG antibody (GTX213110-01) was used to detect the primary antibody.



GTX116011 WB Image

Various whole cell extracts (30 µg) were separated by 5% SDS-PAGE, and the membrane was blotted with DNMT1 antibody [N1], N-term (GTX116011) diluted at 1:5000.



GTX116011 IHC-P Image

DNMT1 antibody [N1], N-term detects DNMT1 protein at cytoplasm and nucleus in human endometrial cancer by immunohistochemical analysis.

Sample: Paraffin-embedded human endometrial cancer.

DNMT1 antibody [N1], N-term (GTX116011) diluted at 1:500.

Antigen Retrieval: Citrate buffer, pH 6.0, 15 min



For full product information, images and publications, please visit our [website](https://www.genetex.com).