

## Presenilin 1 antibody [C1C2], Internal

Cat. No. GTX116016

Host	Rabbit
Clonality	Polyclonal
Isotype	IgG
Applications	WB, ICC/IF, IHC-P
Reactivity	Human, Mouse

References ( 2 )

Package

100 µl, 25 µl

## Applications

## Application Note

\*Optimal dilutions/concentrations should be determined by the researcher.

Suggested dilution	Recommended dilution
WB	1:500-1:3000
ICC/IF	1:100-1:1000
IHC-P	1:100-1:1000

Not tested in other applications.

Calculated MW 53 kDa. ( [Note](#) )

## Properties

Form	Liquid
Buffer	0.1M Tris, 0.1M Glycine, 10% Glycerol
Preservative	0.01% Thimerosal
Storage	Store as concentrated solution. Centrifuge briefly prior to opening vial. For short-term storage (1-2 weeks), store at 4°C. For long-term storage, aliquot and store at -20°C or below. Avoid multiple freeze-thaw cycles.
Concentration	0.53 mg/ml (Please refer to the vial label for the specific concentration.)
Immunogen	Carrier-protein conjugated synthetic peptide encompassing a sequence within the center region of human Presenilin 1. The exact sequence is proprietary.
Purification	Purified by antigen-affinity chromatography.
Conjugation	Unconjugated

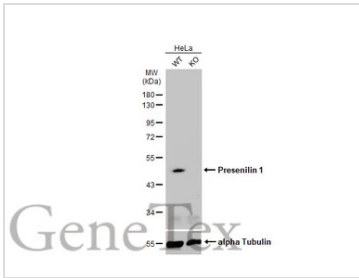
## Note

For laboratory research use only. Not for any clinical, therapeutic, or diagnostic use in humans or animals. Not for animal or human consumption.

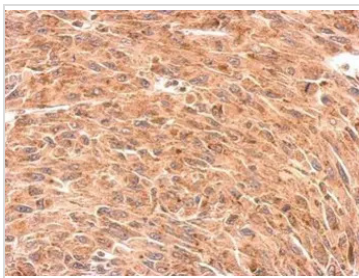
Purchasers shall not, and agree not to enable third parties to, analyze, copy, reverse engineer or otherwise attempt to determine the structure or sequence of the product.



For full product information, images and publications, please visit our [website](#).

**DATA IMAGES**

**GTX116016 WB Image**

Wild-type (WT) and Presenilin 1 knockout (KO) HeLa cell extracts (30 µg) were separated by 10% SDS-PAGE, and the membrane was blotted with Presenilin 1 antibody [C1C2], Internal (GTX116016) diluted at 1:1000. The HRP-conjugated anti-rabbit IgG antibody (GTX213110-01) was used to detect the primary antibody, and the signal was developed with Trident ECL plus-Enhanced.

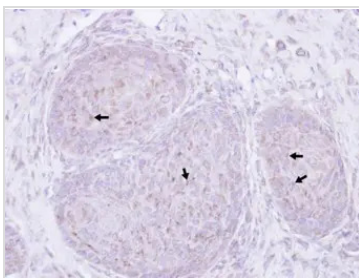

**GTX116016 IHC-P Image**

Presenilin 1 antibody [C1C2], Internal detects PSEN1 protein at cytosol on U87 xenograft by immunohistochemical analysis.

Sample: Paraffin-embedded U87 xenograft.

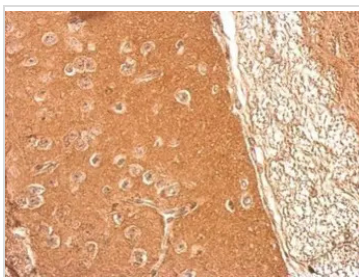
Presenilin 1 antibody [C1C2], Internal (GTX116016) dilution: 1:500.

Antigen Retrieval: Trilogy™ (EDTA based, pH 8.0) buffer, 15min


**GTX116016 IHC-P Image**

Immunohistochemical analysis of paraffin-embedded Cal27 xenograft, using Presenilin 1 (GTX116016) antibody at 1:100 dilution.

Antigen Retrieval: Trilogy™ (EDTA based, pH 8.0) buffer, 15min

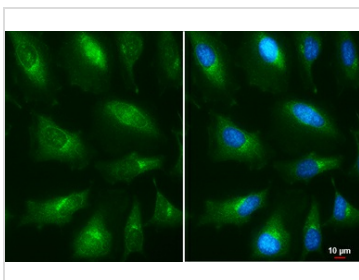

**GTX116016 IHC-P Image**

Presenilin 1 antibody [C1C2], Internal detects PSEN1 protein at cytosol on mouse brain by immunohistochemical analysis.

Sample: Paraffin-embedded mouse brain.

Presenilin 1 antibody [C1C2], Internal (GTX116016) dilution: 1:500.

Antigen Retrieval: Trilogy™ (EDTA based, pH 8.0) buffer, 15min


**GTX116016 ICC/IF Image**

Presenilin 1 antibody [C1C2], Internal detects Presenilin 1 protein at Golgi apparatus and endoplasmic reticulum by immunofluorescent analysis.

Sample: HeLa cells were fixed in ice-cold MeOH for 5 min.

Green: Presenilin 1 stained by Presenilin 1 antibody [C1C2], Internal (GTX116016) diluted at 1:500.

Blue: Hoechst 33342 staining.

Scale bar= 10 µm.



For full product information, images and publications, please visit our [website](https://www.genetex.com).