

CD45 antibody

Cat No. GTX116018

Host	Rabbit
Clonality	Polyclonal
Isotype	IgG
Application	WB, ICC/IF, FACS
Reactivity	Human, Mouse, Rat, Rabbit

Reference (2)
 Package
 100 µl, 25 µl

APPLICATION

Application Note

*Optimal dilutions/concentrations should be determined by the researcher.

Suggested dilution	Dilution
WB	1:500-1:3000
ICC/IF	1:100-1:1000
FACS	1:50-1:200

Not tested in other applications.

Calculated MW 147 kDa. ([Note](#))

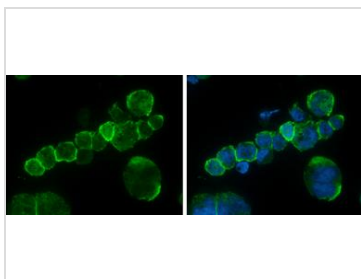
PROPERTIES

Form	Liquid
Buffer	1XPBS, 1% BSA, 20% Glycerol (pH7). 0.025% ProClin 300 was added as a preservative.
Storage	Store as concentrated solution. Centrifuge briefly prior to opening vial. For short-term storage (1-2 weeks), store at 4°C. For long-term storage, aliquot and store at -20°C or below. Avoid multiple freeze-thaw cycles.
Concentration	0.36 mg/ml (Please refer to the vial label for the specific concentration.)
Immunogen	Carrier-protein conjugated synthetic peptide encompassing a sequence within the C-terminus region of human CD45. The exact sequence is proprietary.
Purification	Purified by antigen-affinity chromatography.
Conjugation	Unconjugated
Note	For laboratory use only. Not for any clinical, therapeutic, or diagnostic use in humans or animals. Not for animal or human consumption.



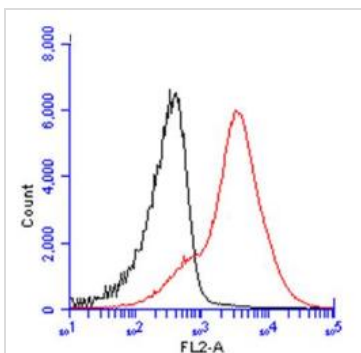
For full product information, images and publications, please visit our [website](#).

DATA IMAGES



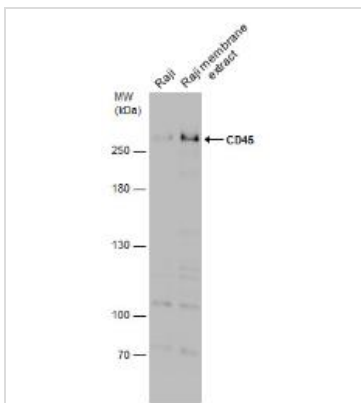
GTX116018 ICC/IF Image

CD45 antibody detects CD45 protein at cell membrane by immunofluorescent analysis.
 Sample: THP-1 cells were fixed in 4% paraformaldehyde at RT for 15 min.
 Green: CD45 protein stained by CD45 antibody (GTX116018) diluted at 1:500.
 Blue: Hoechst 33342 staining.



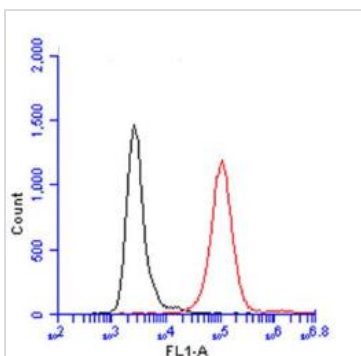
GTX116018 FACS Image

CD45 antibody (GTX116018) detects CD45 protein by flow cytometry analysis.
 Sample: mouse splenocytes cell fixed in 4% paraformaldehyde at 4°C for 15 min.
 Black: Unlabelled sample was used as a control.
 Red: CD45 antibody (GTX116018) dilution: 1:50.
 Acquisition of 20,000 events were collected using a Dylight 488-conjugated secondary antibody for FACS analysis.



GTX116018 WB Image

Raji whole cell and membrane extracts (30 µg) were separated by 5% SDS-PAGE, and the membrane was blotted with CD45 antibody (GTX116018) diluted at 1:1000.



GTX116018 FACS Image

CD45 antibody (GTX116018) detects CD45 protein by flow cytometry analysis.
 Sample: THP-1 cell.
 Black: Unlabelled sample was used as a control.
 Red: CD45 antibody (GTX116018) dilution: 1:50.



For full product information, images and publications, please visit our [website](#).