

## LC3B antibody [N1C3]

Cat. No. GTX116080

Host	Rabbit
Clonality	Polyclonal
Isotype	IgG
Applications	WB, ICC/IF, IHC-P, FCM
Reactivity	Human, Mouse, Rat

References ( 3 )

Package

100 µl, 25 µl

## Applications

## Application Note

\*Optimal dilutions/concentrations should be determined by the researcher.

Suggested dilution	Recommended dilution
WB	1:500-1:3000
ICC/IF	1:100-1:1000
IHC-P	1:100-1:1000
FCM	1:50-1:200

Not tested in other applications.

Calculated MW 15 kDa. ( [Note](#) )

## Properties

Form	Liquid
Buffer	PBS, 1% BSA, 20% Glycerol
Preservative	0.025% ProClin 300
Storage	Store as concentrated solution. Centrifuge briefly prior to opening vial. For short-term storage (1-2 weeks), store at 4°C. For long-term storage, aliquot and store at -20°C or below. Avoid multiple freeze-thaw cycles.
Concentration	0.37 mg/ml (Please refer to the vial label for the specific concentration.)
Immunogen	Full length human LC3B Recombinant protein.
Purification	Purified by antigen-affinity chromatography.
Conjugation	Unconjugated

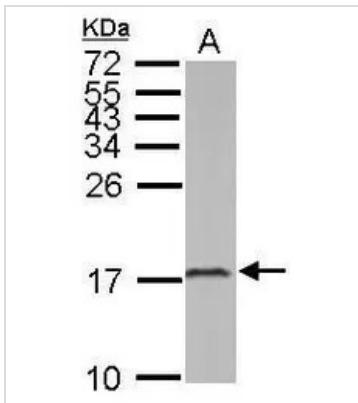
## Note

For laboratory research use only. Not for any clinical, therapeutic, or diagnostic use in humans or animals. Not for animal or human consumption.

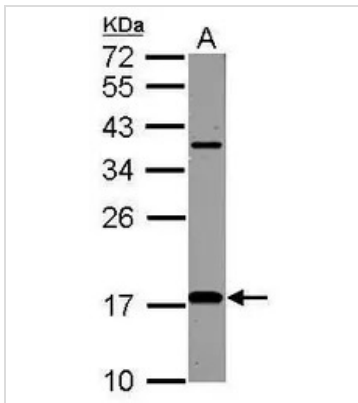
Purchasers shall not, and agree not to enable third parties to, analyze, copy, reverse engineer or otherwise attempt to determine the structure or sequence of the product.



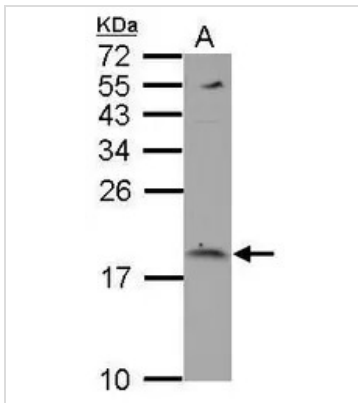
For full product information, images and publications, please visit our [website](#).

**DATA IMAGES**

**GTX116080 WB Image**

Sample (50 ug of whole cell lysate)  
A: mouse brain  
15% SDS PAGE  
GTX116080 diluted at 1:1000


**GTX116080 WB Image**

Sample (50 ug of whole cell lysate)  
A: Rat brain  
12% SDS PAGE  
GTX116080 diluted at 1:1000


**GTX116080 WB Image**

Sample (30 ug of whole cell lysate)  
A: U87-MG  
15% SDS PAGE  
GTX116080 diluted at 1:1000



For full product information, images and publications, please visit our [website](https://www.genetex.com).