

## nm23-H2 antibody

Cat. No. GTX116091

|              |                         |
|--------------|-------------------------|
| Host         | Rabbit                  |
| Clonality    | Polyclonal              |
| Isotype      | IgG                     |
| Applications | WB, IHC-P, IHC-Wm       |
| Reactivity   | Human, Mouse, Zebrafish |

Package  
100 µl, 25 µl

## Applications

## Application Note

\*Optimal dilutions/concentrations should be determined by the researcher.

| Suggested dilution | Recommended dilution |
|--------------------|----------------------|
| WB                 | 1:500-1:3000         |
| IHC-P              | Assay dependent      |
| IHC-Wm             | Assay dependent      |

Not tested in other applications.

Calculated MW 17 kDa. ( [Note](#) )

## Properties

|               |  |
|---------------|--|
| Form          | Liquid   |
| Buffer        | 0.1M Tris, 0.1M Glycine, 20% Glycerol  |
| Preservative  | 0.01% Thimerosal   |
| Storage       | Store as concentrated solution. Centrifuge briefly prior to opening vial. For short-term storage (1-2 weeks), store at 4°C. For long-term storage, aliquot and store at -20°C or below. Avoid multiple freeze-thaw cycles. |
| Concentration | 0.43 mg/ml (Please refer to the vial label for the specific concentration.)  |
| Immunogen     | Recombinant protein encompassing a sequence within the center region of human nm23-H2. The exact sequence is proprietary.  |
| Purification  | Purified by antigen-affinity chromatography.   |
| Conjugation   | Unconjugated   |

## Note

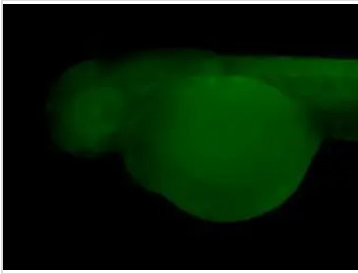
For laboratory research use only. Not for any clinical, therapeutic, or diagnostic use in humans or animals. Not for animal or human consumption.

Purchasers shall not, and agree not to enable third parties to, analyze, copy, reverse engineer or otherwise attempt to determine the structure or sequence of the product.



For full product information, images and publications, please visit our [website](#).

## DATA IMAGES



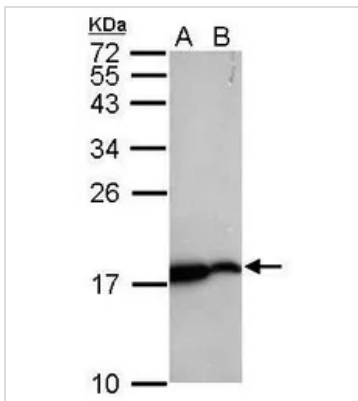
### GTx116091 IHC-Wm Image

Immunohistochemical analysis (whole mount) of zebrafish embryo, using nm23-H2 antibody (GTx116091) at 1:200 dilution.



### GTx116091 IHC-P Image

Immunohistochemical analysis of paraffin-embedded zebrafish tissue, using nm23-H2 antibody (GTx116091) at 1:300 dilution.



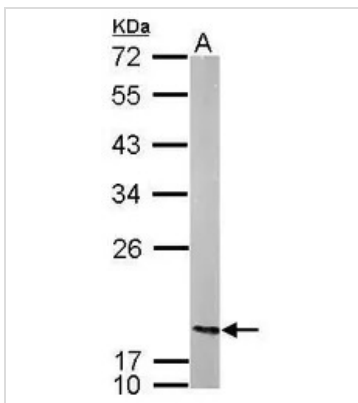
### GTx116091 WB Image

Sample (30 µg of whole cell lysate)

A: whole zebrafish

B: zebrafish heart 15% SDS PAGE

GTx116091 diluted at 1:1000



### GTx116091 WB Image

Sample (50 ug of whole cell lysate)

A: mouse brain

12% SDS PAGE

GTx116091 diluted at 1:1000



For full product information, images and publications, please visit our [website](https://www.genetex.com).