

## HEBP1 antibody [N1C3]

Cat. No. GTX116121

Host	Rabbit
Clonality	Polyclonal
Isotype	IgG
Applications	WB, ICC/IF, IHC-P
Reactivity	Human, Mouse

Package  
100 µl, 25 µl

## Applications

## Application Note

\*Optimal dilutions/concentrations should be determined by the researcher.

Suggested dilution	Recommended dilution
WB	1:500-1:3000
ICC/IF	1:100-1:1000
IHC-P	1:100-1:1000

Not tested in other applications.

Calculated MW 21 kDa. ( [Note](#) )

## Properties

Form	Liquid
Buffer	0.1M Tris, 0.1M Glycine, 20% Glycerol
Preservative	0.01% Thimerosal
Storage	Store as concentrated solution. Centrifuge briefly prior to opening vial. For short-term storage (1-2 weeks), store at 4°C. For long-term storage, aliquot and store at -20°C or below. Avoid multiple freeze-thaw cycles.
Concentration	0.63 mg/ml (Please refer to the vial label for the specific concentration.)
Immunogen	Recombinant protein encompassing a sequence within the center region of human HEBP1. The exact sequence is proprietary.
Purification	Purified by antigen-affinity chromatography.
Conjugation	Unconjugated

## Note

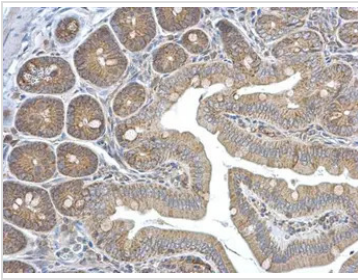
For laboratory research use only. Not for any clinical, therapeutic, or diagnostic use in humans or animals. Not for animal or human consumption.

Purchasers shall not, and agree not to enable third parties to, analyze, copy, reverse engineer or otherwise attempt to determine the structure or sequence of the product.



For full product information, images and publications, please visit our [website](#).

## DATA IMAGES



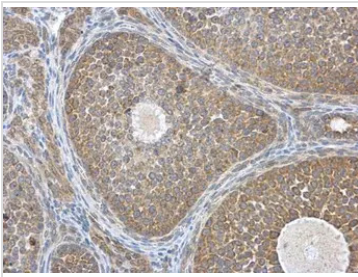
### GTx116121 IHC-P Image

HEBP1 antibody [N1C3] detects HEBP1 protein at cytoplasm in mouse intestine by immunohistochemical analysis.

Sample: Paraffin-embedded mouse intestine.

HEBP1 antibody [N1C3] (GTx116121) diluted at 1:500.

Antigen Retrieval: Citrate buffer, pH 6.0, 15 min



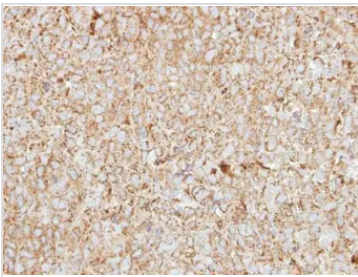
### GTx116121 IHC-P Image

HEBP1 antibody [N1C3] detects HEBP1 protein at cytoplasm in mouse ovary by immunohistochemical analysis.

Sample: Paraffin-embedded mouse ovary.

HEBP1 antibody [N1C3] (GTx116121) diluted at 1:500.

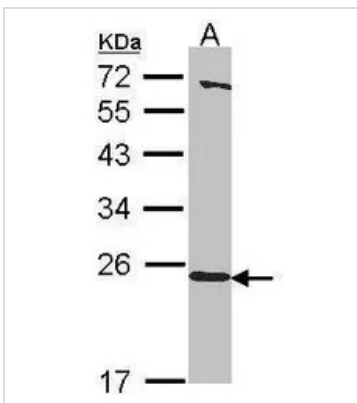
Antigen Retrieval: Citrate buffer, pH 6.0, 15 min



### GTx116121 IHC-P Image

Immunohistochemical analysis of paraffin-embedded CL1-0 xenograft, using HEBP1(GTx116121) antibody at 1:250 dilution.

Antigen Retrieval: Citrate buffer, pH 6.0, 15 min



### GTx116121 WB Image

Sample (30 ug of whole cell lysate)

A: A549

12% SDS PAGE

GTx116121 diluted at 1:1000



For full product information, images and publications, please visit our [website](https://www.genetex.com).