

Geminin antibody

Cat. No. GTX116125

Host	Rabbit
Clonality	Polyclonal
Isotype	IgG
Applications	WB, ICC/IF, IHC-P, IP
Reactivity	Human

References (1)

Package

100 µl, 25 µl

Applications

Application Note

*Optimal dilutions/concentrations should be determined by the researcher.

Suggested dilution	Recommended dilution
WB	1:500-1:3000
ICC/IF	1:100-1:1000
IHC-P	1:100-1:1000
IP	1:100-1:500

Not tested in other applications.

Calculated MW 24 kDa. ([Note](#))

Properties

Form	Liquid
Buffer	0.1M Tris, 0.1M Glycine, 20% Glycerol
Preservative	0.01% Thimerosal
Storage	Store as concentrated solution. Centrifuge briefly prior to opening vial. For short-term storage (1-2 weeks), store at 4°C. For long-term storage, aliquot and store at -20°C or below. Avoid multiple freeze-thaw cycles.
Concentration	1 mg/ml (Please refer to the vial label for the specific concentration.)
Immunogen	Full length human Geminin Recombinant protein.
Purification	Purified by antigen-affinity chromatography.
Conjugation	Unconjugated

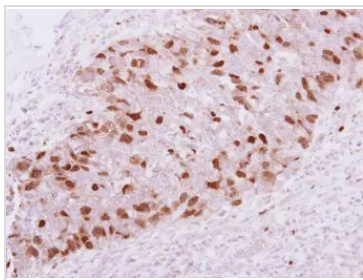
Note

For laboratory research use only. Not for any clinical, therapeutic, or diagnostic use in humans or animals. Not for animal or human consumption.

Purchasers shall not, and agree not to enable third parties to, analyze, copy, reverse engineer or otherwise attempt to determine the structure or sequence of the product.



For full product information, images and publications, please visit our [website](#).

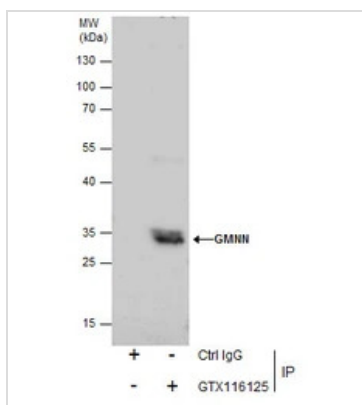
DATA IMAGES

GTx116125 IHC-P Image

Geminin antibody detects Geminin protein at nucleus on human breast cancer by immunohistochemical analysis.

Sample: Paraffin-embedded breast cancer.

Geminin antibody (GTx116125) dilution: 1:250.

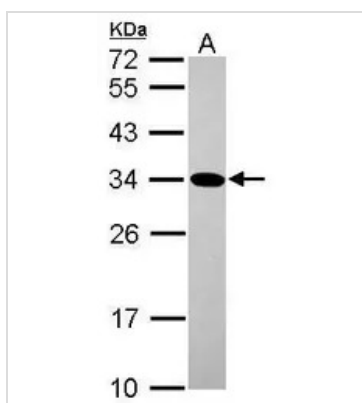
Antigen Retrieval: TrilogTM (EDTA based, pH 8.0) buffer, 15min


GTx116125 IP Image

Immunoprecipitation of Geminin protein from HCT-116 whole cell extracts using 5 µg of Geminin antibody (GTx116125).

Western blot analysis was performed using Geminin antibody (GTx116125) diluted at 1:500.

EasyBlot anti-Rabbit IgG (GTx221666-01) was used as a secondary reagent.

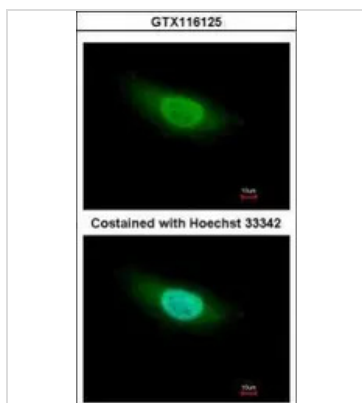

GTx116125 WB Image

Sample (30 ug of whole cell lysate)

A: HCT116

12% SDS PAGE

GTx116125 diluted at 1:1000


GTx116125 ICC/IF Image

Immunofluorescence analysis of paraformaldehyde-fixed HeLa, using Geminin (GTx116125) antibody at 1:500 dilution.



For full product information, images and publications, please visit our [website](http://www.genetex.com).