

YBX2 antibody [N2C2], Internal

Cat. No. GTX116127

Host	Rabbit
Clonality	Polyclonal
Isotype	IgG
Applications	WB, ICC/IF, IHC-P
Reactivity	Human, Mouse

Package
100 µl, 25 µl

Applications

Application Note

*Optimal dilutions/concentrations should be determined by the researcher.

Suggested dilution	Recommended dilution
WB	1:500-1:3000
ICC/IF	1:100-1:1000
IHC-P	1:100-1:1000

Not tested in other applications.

Calculated MW 39 kDa. ([Note](#))

Properties

Form	Liquid
Buffer	PBS, 1% BSA, 20% Glycerol
Preservative	0.01% Thimerosal
Storage	Store as concentrated solution. Centrifuge briefly prior to opening vial. For short-term storage (1-2 weeks), store at 4°C. For long-term storage, aliquot and store at -20°C or below. Avoid multiple freeze-thaw cycles.
Concentration	0.43 mg/ml (Please refer to the vial label for the specific concentration.)
Immunogen	Recombinant protein encompassing a sequence within the center region of human YBX2. The exact sequence is proprietary.
Purification	Purified by antigen-affinity chromatography.
Conjugation	Unconjugated

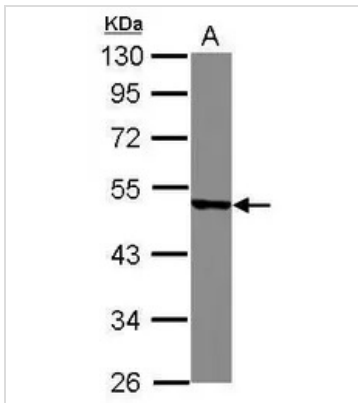
Note

For laboratory research use only. Not for any clinical, therapeutic, or diagnostic use in humans or animals. Not for animal or human consumption.

Purchasers shall not, and agree not to enable third parties to, analyze, copy, reverse engineer or otherwise attempt to determine the structure or sequence of the product.



For full product information, images and publications, please visit our [website](#).

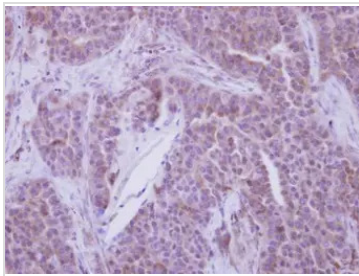
DATA IMAGES

GTx116127 WB Image

Sample (30 ug of whole cell lysate)

A: IMR32

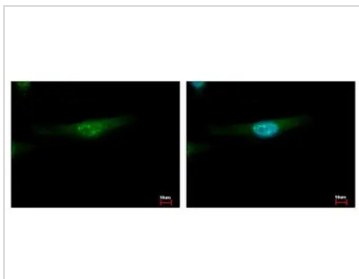
10% SDS PAGE

GTx116127 diluted at 1:1000


GTx116127 IHC-P Image

Immunohistochemical analysis of paraffin-embedded human lung adenocarcinoma, using YBX2(GTx116127) antibody at 1:250 dilution.

Antigen Retrieval: Trilogy™ (EDTA based, pH 8.0) buffer, 15min

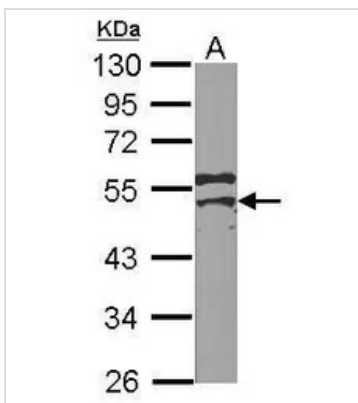

GTx116127 ICC/IF Image

YBX2 antibody [N2C2], Internal detects YBX2 protein at cytoplasm and nucleus by immunofluorescent analysis.

Sample: HeLa cells were fixed in ice-cold MeOH for 5 min.

Green: YBX2 protein stained by YBX2 antibody [N2C2], Internal (GTx116127) diluted at 1:500.

Blue: Hoechst 33343 staining.


GTx116127 WB Image

Sample (50 ug of whole cell lysate)

A: mouse testis

10% SDS PAGE

GTx116127 diluted at 1:1000



For full product information, images and publications, please visit our [website](https://www.genetex.com).