

## SFMBT1 antibody [N1N2], N-term

**Cat. No. GTX116167**

<b>Host</b>	Rabbit
<b>Clonality</b>	Polyclonal
<b>Isotype</b>	IgG
<b>Applications</b>	WB
<b>Reactivity</b>	Human

**Package**  
100 µl, 25 µl

## Applications

**Application Note**

\*Optimal dilutions/concentrations should be determined by the researcher.

**Suggested dilution**                      **Recommended dilution**

WB    1:500-1:3000

Not tested in other applications.

**Calculated MW**                      98 kDa. ( [Note](#) )

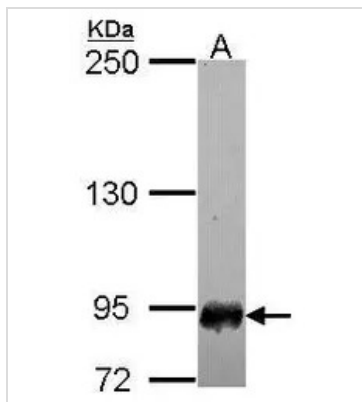
## Properties

**Form**                                      Liquid**Buffer**                                    0.1M Tris, 0.1M Glycine, 20% Glycerol**Preservative**                          0.01% Thimerosal**Storage**                                Store as concentrated solution. Centrifuge briefly prior to opening vial. For short-term storage (1-2 weeks), store at 4°C. For long-term storage, aliquot and store at -20°C or below. Avoid multiple freeze-thaw cycles.**Concentration**                        0.6 mg/ml (Please refer to the vial label for the specific concentration.)**Immunogen**                            Recombinant protein encompassing a sequence within the N-terminus region of human SFMBT1. The exact sequence is proprietary.**Purification**                            Purified by antigen-affinity chromatography.**Conjugation**                            Unconjugated**Note**  
For laboratory research use only. Not for any clinical, therapeutic, or diagnostic use in humans or animals. Not for animal or human consumption.

Purchasers shall not, and agree not to enable third parties to, analyze, copy, reverse engineer or otherwise attempt to determine the structure or sequence of the product.

For full product information, images and publications, please visit our [website](#).

## DATA IMAGES

**GTX116167 WB Image**

Sample (30 ug of whole cell lysate)

A: IMR32

7.5% SDS PAGE

GTX116167 diluted at 1:3000



For full product information, images and publications, please visit our [website](#).