

DNALI1 antibody

Cat. No. GTX116217

| | |
|---------------------|-------------------|
| Host | Rabbit |
| Clonality | Polyclonal |
| Isotype | IgG |
| Applications | WB, ICC/IF, IHC-P |
| Reactivity | Human, Mouse |

Package
100 µl, 25 µl

Applications

Application Note

*Optimal dilutions/concentrations should be determined by the researcher.

| Suggested dilution | Recommended dilution |
|--------------------|----------------------|
| WB | 1:500-1:3000 |
| ICC/IF | 1:100-1:1000 |
| IHC-P | 1:100-1:1000 |

Not tested in other applications.

Calculated MW 30 kDa. ([Note](#))

Properties

| | |
|----------------------|--|
| Form | Liquid |
| Buffer | 0.1M Tris, 0.1M Glycine, 20% Glycerol |
| Preservative | 0.01% Thimerosal |
| Storage | Store as concentrated solution. Centrifuge briefly prior to opening vial. For short-term storage (1-2 weeks), store at 4°C. For long-term storage, aliquot and store at -20°C or below. Avoid multiple freeze-thaw cycles. |
| Concentration | 0.9 mg/ml (Please refer to the vial label for the specific concentration.) |
| Immunogen | Recombinant protein encompassing a sequence within the center region of human DNALI1. The exact sequence is proprietary. |
| Purification | Purified by antigen-affinity chromatography. |
| Conjugation | Unconjugated |

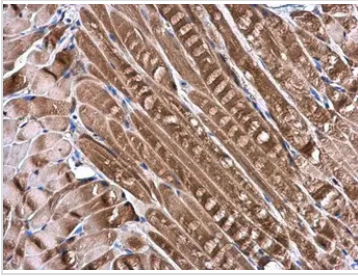
Note

For laboratory research use only. Not for any clinical, therapeutic, or diagnostic use in humans or animals. Not for animal or human consumption.

Purchasers shall not, and agree not to enable third parties to, analyze, copy, reverse engineer or otherwise attempt to determine the structure or sequence of the product.



For full product information, images and publications, please visit our [website](#).

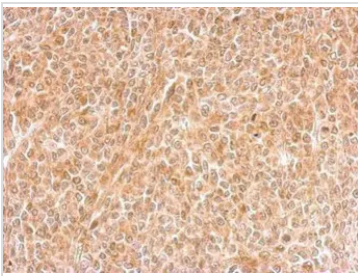
DATA IMAGES

GTX116217 IHC-P Image

DNALI1 antibody detects DNALI1 protein at cytoplasm in mouse muscle by immunohistochemical analysis.

Sample: Paraffin-embedded mouse muscle.

DNALI1 antibody (GTX116217) diluted at 1:500.

Antigen Retrieval: Citrate buffer, pH 6.0, 15 min

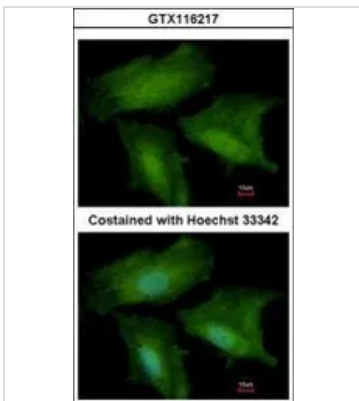

GTX116217 IHC-P Image

DNALI1 antibody detects DNALI1 protein at cytosol on BT483 xenograft by immunohistochemical analysis.

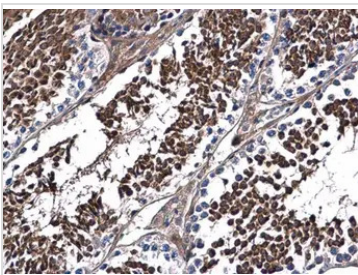
Sample: Paraffin-embedded BT483 xenograft.

DNALI1 antibody (GTX116217) dilution: 1:500.

Antigen Retrieval: Trilogy™ (EDTA based, pH 8.0) buffer, 15min


GTX116217 ICC/IF Image

Immunofluorescence analysis of methanol-fixed A549, using DNALI1(GTX116217) antibody at 1:500 dilution.


GTX116217 IHC-P Image

DNALI1 antibody detects DNALI1 protein at cytoplasm in mouse testis by immunohistochemical analysis.

Sample: Paraffin-embedded mouse testis.

DNALI1 antibody (GTX116217) diluted at 1:500.

Antigen Retrieval: Citrate buffer, pH 6.0, 15 min



For full product information, images and publications, please visit our [website](https://www.genetex.com).