

# CSDE1 antibody [N2C1], Internal

**Cat. No. GTX116218**

<b>Host</b>	Rabbit
<b>Clonality</b>	Polyclonal
<b>Isotype</b>	IgG
<b>Application</b>	WB, ICC/IF, IHC-P
<b>Reactivity</b>	Human

Reference ( 1 )  
 Package  
 100 µl, 25 µl

## APPLICATION

### Application Note

\*Optimal dilutions/concentrations should be determined by the researcher.

Suggested dilution	Recommended dilution
WB	1:500-1:3000
ICC/IF	1:100-1:1000
IHC-P	1:100-1:1000

Not tested in other applications.

**Calculated MW** 89 kDa. ( [Note](#) )

## PROPERTIES

<b>Form</b>	Liquid
<b>Buffer</b>	0.1M Tris, 0.1M Glycine, 20% Glycerol
<b>Preservative</b>	0.01% Thimerosal
<b>Storage</b>	Store as concentrated solution. Centrifuge briefly prior to opening vial. For short-term storage (1-2 weeks), store at 4°C. For long-term storage, aliquot and store at -20°C or below. Avoid multiple freeze-thaw cycles.
<b>Concentration</b>	0.77 mg/ml (Please refer to the vial label for the specific concentration.)
<b>Immunogen</b>	Recombinant protein encompassing a sequence within the center region of human CSDE1. The exact sequence is proprietary.
<b>Purification</b>	Purified by antigen-affinity chromatography.
<b>Conjugation</b>	Unconjugated

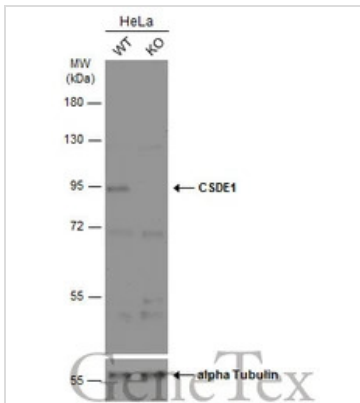
**Note** For laboratory research use only. Not for any clinical, therapeutic, or diagnostic use in humans or animals. Not for animal or human consumption.

Purchasers shall not, and agree not to enable third parties to, analyze, copy, reverse engineer or otherwise attempt to determine the structure or sequence of the product.



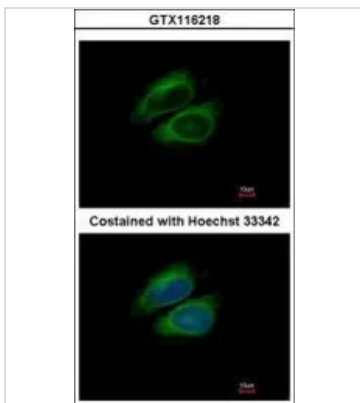
For full product information, images and publications, please visit our [website](#).

DATA IMAGES



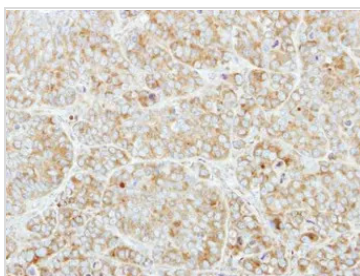
**GTX116218 WB Image**

Wild-type (WT) and CSDE1 knockout (KO) HeLa cell extracts (30 µg) were separated by 7.5% SDS-PAGE, and the membrane was blotted with CSDE1 antibody [N2C1], Internal (GTX116218) diluted at 1:1000. The HRP-conjugated anti-rabbit IgG antibody (GTX213110-01) was used to detect the primary antibody.



**GTX116218 ICC/IF Image**

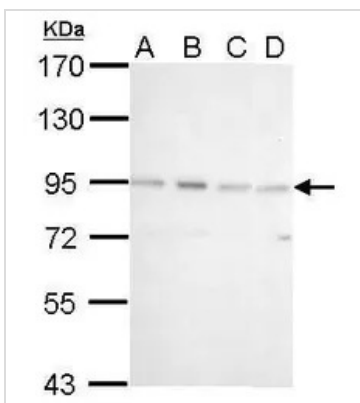
Immunofluorescence analysis of methanol-fixed HeLa, using CSDE1(GTX116218) antibody at 1:200 dilution.



**GTX116218 IHC-P Image**

Immunohistochemical analysis of paraffin-embedded MCF7 xenograft, using CSDE1(GTX116218) antibody at 1:250 dilution.

Antigen Retrieval: Citrate buffer, pH 6.0, 15 min



**GTX116218 WB Image**

CSDE1 antibody [N2C1], Internal detects CSDE1 protein by western blot analysis.

A. 30 µg 293T whole cell lysate/extract

B. 30 µg A431 whole cell lysate/extract

C. 30 µg HeLa whole cell lysate/extract

D. 30 µg A375 whole cell lysate/extract

7.5% SDS-PAGE

CSDE1 antibody [N2C1], Internal (GTX116218) dilution: 1:1000

The HRP-conjugated anti-rabbit IgG antibody (GTX213110-01) was used to detect the primary antibody.



For full product information, images and publications, please visit our [website](https://www.genetex.com).