

## Human 4E-BP1 protein, His tag

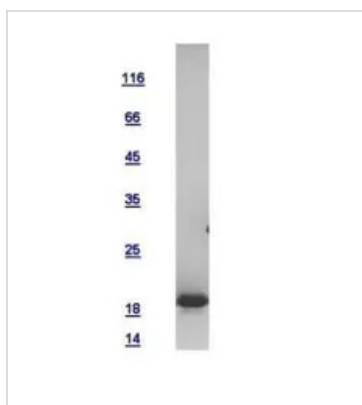
**Cat. No. GTX116315-pro****Species** Human**Package**

100 µg, 25 µg

## Properties

**Form** Liquid**Buffer** PBS, 0.1% SDS**Preservative** No preservatives**Storage** Store as concentrated solution. Centrifuge briefly prior to opening vial. Aliquot and store at -20°C or below. Avoid multiple freeze-thaw cycles.**Concentration** Batch dependent (Please refer to the vial label for the specific concentration.)**Region/Sequence** N-terminal His tagged full length protein of AAH04459**Expression System** E. coli**Purity** >95%**Conjugation** Unconjugated**Note** For In vitro laboratory use only. Not for any clinical, therapeutic, or diagnostic use in humans or animals. Not for animal or human consumption.

## DATA IMAGES

**GTX116315-pro Image**

10µg of GTX116315-pro EIF4EBP1 recombinant protein analyzed using SDS-PAGE and stained with coomassie blue and captured by black and white camera.



For full product information, images and publications, please visit our [website](https://www.genetex.com).