

## CNDP2 antibody [N3C3]

Cat. No. GTX116375

|              |                   |
|--------------|-------------------|
| Host         | Rabbit            |
| Clonality    | Polyclonal        |
| Isotype      | IgG               |
| Applications | WB, ICC/IF, IHC-P |
| Reactivity   | Human, Mouse      |

Package  
100 µl, 25 µl

## Applications

## Application Note

\*Optimal dilutions/concentrations should be determined by the researcher.

| Suggested dilution | Recommended dilution |
|--------------------|----------------------|
| WB                 | 1:500-1:3000         |
| ICC/IF             | 1:100-1:1000         |
| IHC-P              | 1:100-1:1000         |

Not tested in other applications.

Calculated MW 53 kDa. ( [Note](#) )

## Properties

|               |  |
|---------------|--|
| Form          | Liquid   |
| Buffer        | 0.1M Tris, 0.1M Glycine, 20% Glycerol  |
| Preservative  | 0.01% Thimerosal   |
| Storage       | Store as concentrated solution. Centrifuge briefly prior to opening vial. For short-term storage (1-2 weeks), store at 4°C. For long-term storage, aliquot and store at -20°C or below. Avoid multiple freeze-thaw cycles. |
| Concentration | 0.59 mg/ml (Please refer to the vial label for the specific concentration.)  |
| Immunogen     | Recombinant protein encompassing a sequence within the center region of human CNDP2. The exact sequence is proprietary.  |
| Purification  | Purified by antigen-affinity chromatography.   |
| Conjugation   | Unconjugated   |

## Note

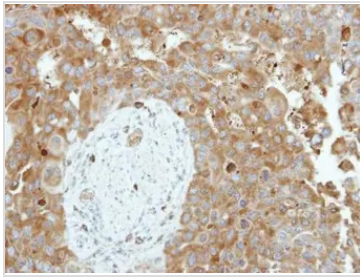
For laboratory research use only. Not for any clinical, therapeutic, or diagnostic use in humans or animals. Not for animal or human consumption.

Purchasers shall not, and agree not to enable third parties to, analyze, copy, reverse engineer or otherwise attempt to determine the structure or sequence of the product.



For full product information, images and publications, please visit our [website](#).

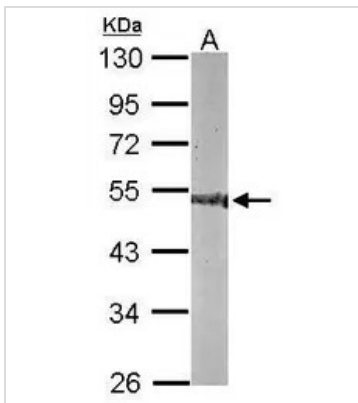
## DATA IMAGES



### GTx116375 IHC-P Image

Immunohistochemical analysis of paraffin-embedded H441 xenograft, using CNDP2(GTx116375) antibody at 1:250 dilution.

Antigen Retrieval: Citrate buffer, pH 6.0, 15 min



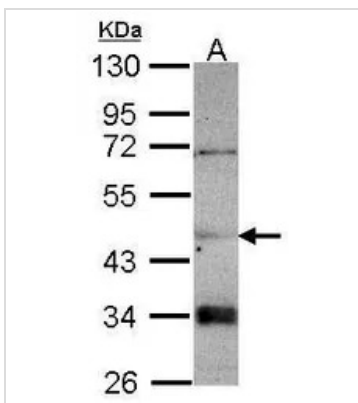
### GTx116375 WB Image

Sample (50 ug of whole cell lysate)

A: mouse brain

10% SDS PAGE

GTx116375 diluted at 1:1000



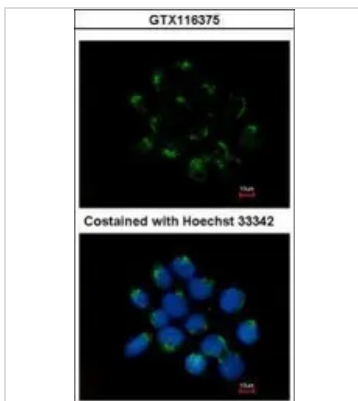
### GTx116375 WB Image

Sample (30 ug of whole cell lysate)

A: A431 (GTx27909)

10% SDS PAGE

GTx116375 diluted at 1:1000



### GTx116375 ICC/IF Image

Immunofluorescence analysis of methanol-fixed A431, using CNDP2(GTx116375) antibody at 1:500 dilution.



For full product information, images and publications, please visit our [website](https://www.genetex.com).