

SIN3B antibody [N1N2-2], N-term

Cat. No. GTX116417

Host	Rabbit
Clonality	Polyclonal
Isotype	IgG
Applications	WB, ICC/IF, IP
Reactivity	Human, Mouse

Package
100 µl, 25 µl

Applications

Application Note

*Optimal dilutions/concentrations should be determined by the researcher.

Suggested dilution	Recommended dilution
WB	1:500-1:3000
ICC/IF	1:100-1:1000
IP	1:100-1:500

Not tested in other applications.

Calculated MW 133 kDa. ([Note](#))

Properties

Form	Liquid
Buffer	0.1M Tris, 0.1M Glycine, 20% Glycerol
Preservative	0.01% Thimerosal
Storage	Store as concentrated solution. Centrifuge briefly prior to opening vial. For short-term storage (1-2 weeks), store at 4°C. For long-term storage, aliquot and store at -20°C or below. Avoid multiple freeze-thaw cycles.
Concentration	0.57 mg/ml (Please refer to the vial label for the specific concentration.)
Immunogen	Recombinant protein encompassing a sequence within the center region of human SIN3B. The exact sequence is proprietary.
Purification	Purified by antigen-affinity chromatography.
Conjugation	Unconjugated

Note

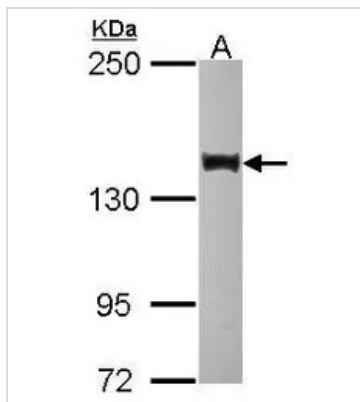
For laboratory research use only. Not for any clinical, therapeutic, or diagnostic use in humans or animals. Not for animal or human consumption.

Purchasers shall not, and agree not to enable third parties to, analyze, copy, reverse engineer or otherwise attempt to determine the structure or sequence of the product.



For full product information, images and publications, please visit our [website](#).

DATA IMAGES



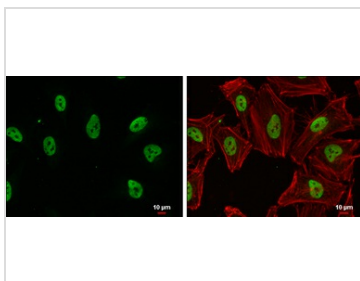
GTX116417 WB Image

Sample (30 ug of whole cell lysate)

A: HCT116

10% SDS PAGE

GTX116417 diluted at 1:1000



GTX116417 ICC/IF Image

SIN3B antibody [N1N2-2], N-term detects SIN3B protein at nucleus by immunofluorescent analysis.

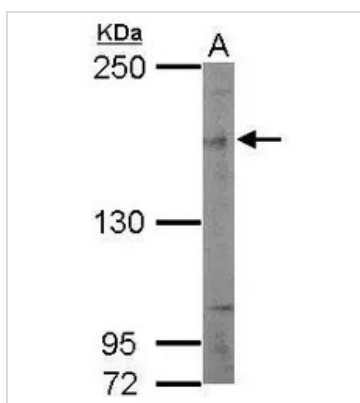
Sample: HeLa cells were fixed in 4% paraformaldehyde at RT for 15 min.

Green: SIN3B protein stained by SIN3B antibody [N1N2-2], N-term (GTX116417) diluted at 1:500.

Red: phalloidin, a cytoskeleton marker, diluted at 1:200.

Blue: Hoechst 33342 staining.

Scale bar = 10 μm.



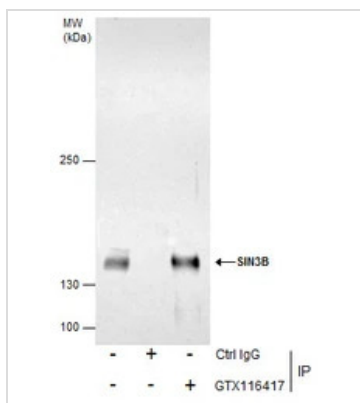
GTX116417 WB Image

Sample (50 ug of whole cell lysate)

A: mouse brain

5% SDS PAGE

GTX116417 diluted at 1:500



GTX116417 IP Image

Immunoprecipitation of SIN3B protein from HCT-116 whole cell extracts using 5 μg of SIN3B antibody [N1N2-2], N-term (GTX116417).

Western blot analysis was performed using SIN3B antibody [N1N2-2], N-term (GTX116417) diluted at 1:500.

EasyBlot anti-Rabbit IgG (GTX221666-01) was used as a secondary reagent.



For full product information, images and publications, please visit our [website](https://www.genetex.com).