

TRIP15 antibody

Cat. No. GTX116463

| | |
|---------------------|-------------------|
| Host | Rabbit |
| Clonality | Polyclonal |
| Isotype | IgG |
| Applications | WB, ICC/IF, IHC-P |
| Reactivity | Human, Mouse |

References (1)

Package

100 µl, 25 µl

Applications

Application Note

*Optimal dilutions/concentrations should be determined by the researcher.

| Suggested dilution | Recommended dilution |
|--------------------|----------------------|
| WB | 1:5000-1:20000 |
| ICC/IF | 1:100-1:1000 |
| IHC-P | 1:100-1:1000 |

Not tested in other applications.

Calculated MW 52 kDa. ([Note](#))

Properties

| | |
|----------------------|--|
| Form | Liquid |
| Buffer | PBS, 20% Glycerol |
| Preservative | 0.01% Thimerosal |
| Storage | Store as concentrated solution. Centrifuge briefly prior to opening vial. For short-term storage (1-2 weeks), store at 4°C. For long-term storage, aliquot and store at -20°C or below. Avoid multiple freeze-thaw cycles. |
| Concentration | 1 mg/ml (Please refer to the vial label for the specific concentration.) |
| Immunogen | Recombinant protein encompassing a sequence within the center region of human TRIP15. The exact sequence is proprietary. |
| Purification | Purified by antigen-affinity chromatography. |
| Conjugation | Unconjugated |

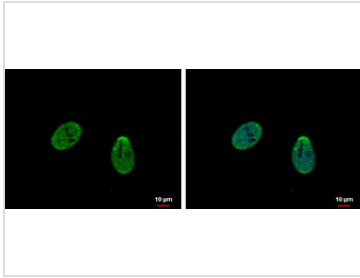
Note

For laboratory research use only. Not for any clinical, therapeutic, or diagnostic use in humans or animals. Not for animal or human consumption.

Purchasers shall not, and agree not to enable third parties to, analyze, copy, reverse engineer or otherwise attempt to determine the structure or sequence of the product.

For full product information, images and publications, please visit our [website](#).

DATA IMAGES

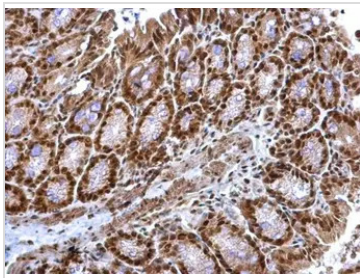
**GTX116463 ICC/IF Image**

TRIP15 antibody detects TRIP15 protein at nucleus by immunofluorescent analysis.

Sample: HeLa cells were fixed in 4% paraformaldehyde at RT for 15 min.

Green: TRIP15 protein stained by TRIP15 antibody (GTX116463) diluted at 1:500.

Blue: Hoechst 33342 staining.

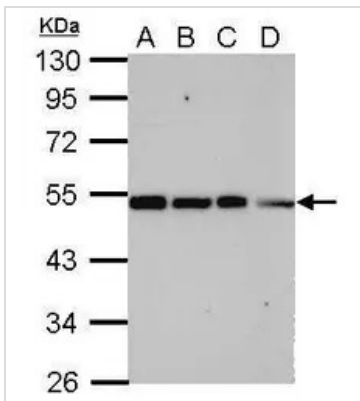
**GTX116463 IHC-P Image**

TRIP15 antibody detects TRIP15 protein at cytosol and nucleus on mouse colon by immunohistochemical analysis.

Sample: Paraffin-embedded mouse colon.

TRIP15 antibody (GTX116463) dilution: 1:500.

Antigen Retrieval: Trilogy™ (EDTA based, pH 8.0) buffer, 15min

**GTX116463 WB Image**

Sample (30 ug of whole cell lysate)

A: 293T

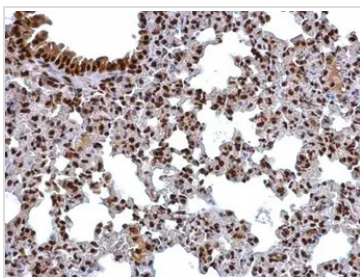
B: A431

C: HeLa

D: HepG2

10% SDS PAGE

GTX116463 diluted at 1:10000

**GTX116463 IHC-P Image**

TRIP15 antibody detects TRIP15 protein at cytosol and nucleus on mouse lung by immunohistochemical analysis.

Sample: Paraffin-embedded mouse lung.

TRIP15 antibody (GTX116463) dilution: 1:500.

Antigen Retrieval: Trilogy™ (EDTA based, pH 8.0) buffer, 15min



For full product information, images and publications, please visit our [website](https://www.genetex.com).