

TRIP15 antibody

Cat. No. GTX116463

Host	Rabbit
Clonality	Polyclonal
Isotype	IgG
Applications	WB, ICC/IF, IHC-P
Reactivity	Human, Mouse

References (1)

Package

100 µl, 25 µl

Applications

Application Note

*Optimal dilutions/concentrations should be determined by the researcher.

Suggested dilution	Recommended dilution
WB	1:5000-1:20000
ICC/IF	1:100-1:1000
IHC-P	1:100-1:1000

Not tested in other applications.

Calculated MW 52 kDa. ([Note](#))

Properties

Form	Liquid
Buffer	PBS, 20% Glycerol
Preservative	0.01% Thimerosal
Storage	Store as concentrated solution. Centrifuge briefly prior to opening vial. For short-term storage (1-2 weeks), store at 4°C. For long-term storage, aliquot and store at -20°C or below. Avoid multiple freeze-thaw cycles.
Concentration	1 mg/ml (Please refer to the vial label for the specific concentration.)
Immunogen	Recombinant protein encompassing a sequence within the center region of human TRIP15. The exact sequence is proprietary.
Purification	Purified by antigen-affinity chromatography.
Conjugation	Unconjugated

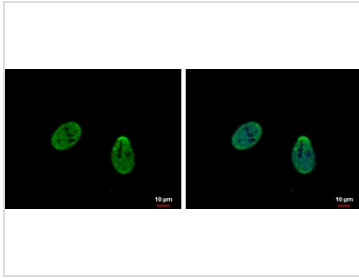
Note

For laboratory research use only. Not for any clinical, therapeutic, or diagnostic use in humans or animals. Not for animal or human consumption.

Purchasers shall not, and agree not to enable third parties to, analyze, copy, reverse engineer or otherwise attempt to determine the structure or sequence of the product.



For full product information, images and publications, please visit our [website](#).

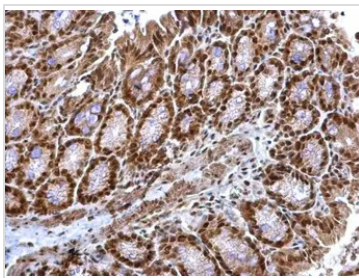
DATA IMAGES

GTx116463 ICC/IF Image

TRIP15 antibody detects TRIP15 protein at nucleus by immunofluorescent analysis.

Sample: HeLa cells were fixed in 4% paraformaldehyde at RT for 15 min.

Green: TRIP15 protein stained by TRIP15 antibody (GTx116463) diluted at 1:500.

Blue: Hoechst 33342 staining.

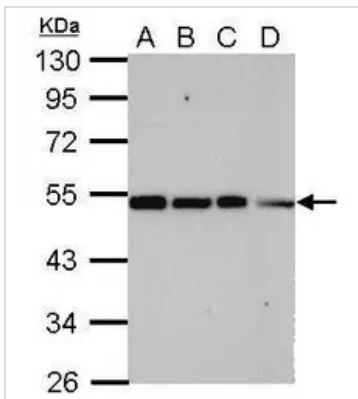

GTx116463 IHC-P Image

TRIP15 antibody detects TRIP15 protein at cytosol and nucleus on mouse colon by immunohistochemical analysis.

Sample: Paraffin-embedded mouse colon.

TRIP15 antibody (GTx116463) dilution: 1:500.

Antigen Retrieval: Trilogy™ (EDTA based, pH 8.0) buffer, 15min


GTx116463 WB Image

Sample (30 ug of whole cell lysate)

A: 293T

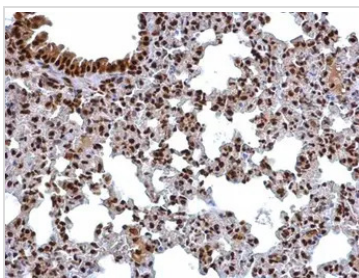
B: A431

C: HeLa

D: HepG2

10% SDS PAGE

GTx116463 diluted at 1:10000


GTx116463 IHC-P Image

TRIP15 antibody detects TRIP15 protein at cytosol and nucleus on mouse colon by immunohistochemical analysis.

Sample: Paraffin-embedded mouse colon.

TRIP15 antibody (GTx116463) dilution: 1:500.

Antigen Retrieval: Trilogy™ (EDTA based, pH 8.0) buffer, 15min



For full product information, images and publications, please visit our [website](http://www.genetex.com).