

## DNA polymerase epsilon 3 antibody [N1C3]

Cat. No. GTX116557

|              |                   |
|--------------|-------------------|
| Host         | Rabbit            |
| Clonality    | Polyclonal        |
| Isotype      | IgG               |
| Applications | WB, ICC/IF, IHC-P |
| Reactivity   | Human, Mouse      |

References ( 1 )

Package

100 µl, 25 µl

## Applications

## Application Note

\*Optimal dilutions/concentrations should be determined by the researcher.

| Suggested dilution | Recommended dilution |
|--------------------|----------------------|
| WB                 | 1:500-1:3000         |
| ICC/IF             | 1:100-1:1000         |
| IHC-P              | 1:100-1:1000         |

Not tested in other applications.

Calculated MW 17 kDa. ( [Note](#) )

## Properties

|               |  |
|---------------|--|
| Form          | Liquid   |
| Buffer        | 0.1M Tris, 0.1M Glycine, 20% Glycerol  |
| Preservative  | 0.01% Thimerosal   |
| Storage       | Store as concentrated solution. Centrifuge briefly prior to opening vial. For short-term storage (1-2 weeks), store at 4°C. For long-term storage, aliquot and store at -20°C or below. Avoid multiple freeze-thaw cycles. |
| Concentration | 1.01 mg/ml (Please refer to the vial label for the specific concentration.)  |
| Immunogen     | Recombinant protein encompassing a sequence within the center region of human DNA polymerase epsilon 3. The exact sequence is proprietary.   |
| Purification  | Purified by antigen-affinity chromatography.   |
| Conjugation   | Unconjugated   |

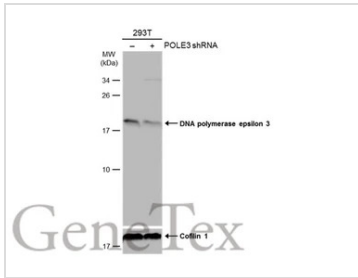
## Note

For laboratory research use only. Not for any clinical, therapeutic, or diagnostic use in humans or animals. Not for animal or human consumption.

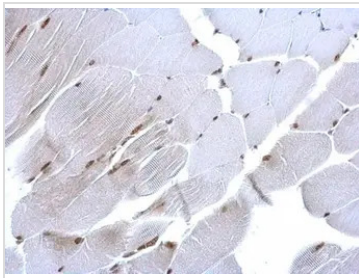
Purchasers shall not, and agree not to enable third parties to, analyze, copy, reverse engineer or otherwise attempt to determine the structure or sequence of the product.



For full product information, images and publications, please visit our [website](#).

**DATA IMAGES**

**GTx116557 WB Image**

Non-transfected (–) and transfected (+) 293T whole cell extracts (30 µg) were separated by 15% SDS-PAGE, and the membrane was blotted with DNA polymerase epsilon 3 antibody [N1C3] (GTx116557) diluted at 1:2000. The HRP-conjugated anti-rabbit IgG antibody (GTx213110-01) was used to detect the primary antibody, and the signal was developed with Trident ECL plus-Enhanced.

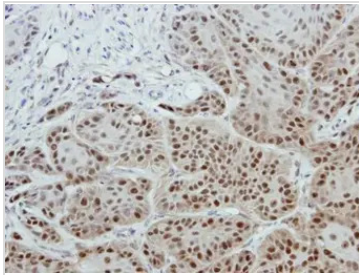

**GTx116557 IHC-P Image**

DNA polymerase epsilon antibody [N1C3] detects DNA Polymerase epsilon protein at nucleus on mouse muscle by immunohistochemical analysis.

Sample: Paraffin-embedded mouse muscle.

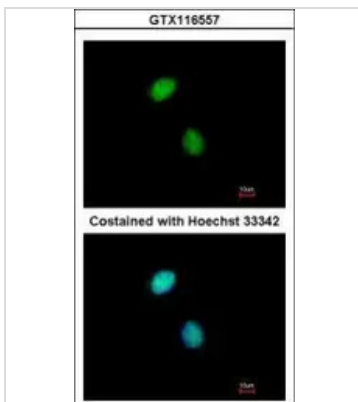
DNA Polymerase epsilon antibody [N1C3] (GTx116557) dilution: 1:1000.

Antigen Retrieval: Trilogy™ (EDTA based, pH 8.0) buffer, 15min


**GTx116557 IHC-P Image**

Immunohistochemical analysis of paraffin-embedded Cal27 xenograft, using DNA polymerase epsilon (GTx116557) antibody at 1:500 dilution.

Antigen Retrieval: Trilogy™ (EDTA based, pH 8.0) buffer, 15min


**GTx116557 ICC/IF Image**

Immunofluorescence analysis of paraformaldehyde-fixed HeLa, using DNA polymerase epsilon (GTx116557) antibody at 1:200 dilution.



For full product information, images and publications, please visit our [website](http://www.genetex.com).