

# PRMT7 antibody

**Cat. No. GTX116570**

<b>Host</b>	Rabbit
<b>Clonality</b>	Polyclonal
<b>Isotype</b>	IgG
<b>Applications</b>	ICC/IF, IHC-P, IP, ChIP assay
<b>Reactivity</b>	Human, Mouse

References ( 2 )

Package

100 µl, 25 µl

## Applications

### Application Note

\*Optimal dilutions/concentrations should be determined by the researcher.

Suggested dilution	Recommended dilution
ICC/IF	1:100-1:1000
IHC-P	1:100-1:1000
IP	1:100-1:500
ChIP assay	Assay dependent

Not tested in other applications.

## Properties

<b>Form</b>	Liquid
<b>Buffer</b>	PBS, 1% BSA, 20% Glycerol
<b>Preservative</b>	0.01% Thimerosal
<b>Storage</b>	Store as concentrated solution. Centrifuge briefly prior to opening vial. For short-term storage (1-2 weeks), store at 4°C. For long-term storage, aliquot and store at -20°C or below. Avoid multiple freeze-thaw cycles.
<b>Concentration</b>	1 mg/ml (Please refer to the vial label for the specific concentration.)
<b>Immunogen</b>	Recombinant protein encompassing a sequence within the center region of human PRMT7. The exact sequence is proprietary.
<b>Purification</b>	Purified by antigen-affinity chromatography.
<b>Conjugation</b>	Unconjugated

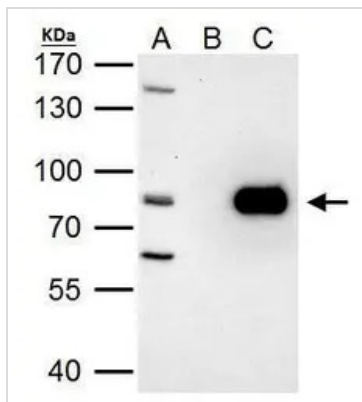
### Note

For laboratory research use only. Not for any clinical, therapeutic, or diagnostic use in humans or animals. Not for animal or human consumption.

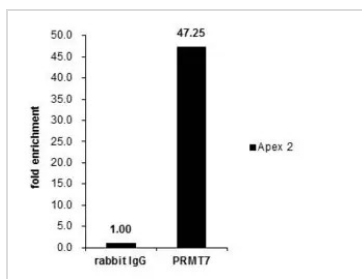
Purchasers shall not, and agree not to enable third parties to, analyze, copy, reverse engineer or otherwise attempt to determine the structure or sequence of the product.



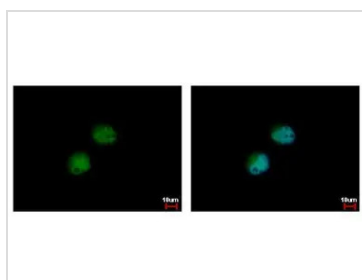
For full product information, images and publications, please visit our [website](#).

**DATA IMAGES**

**GTx116570 IP Image**

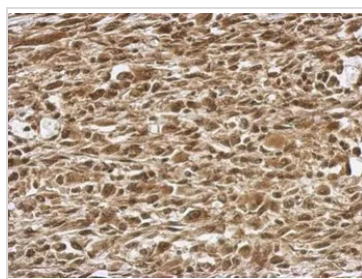
PRMT7 antibody immunoprecipitates PRMT7 protein in IP experiments. IP Sample: HeLa whole cell lysate/extract A. 40 µg HeLa whole cell lysate/extract B. Control with 2 µg of preimmune rabbit IgG C. Immunoprecipitation of PRMT7 protein by 2 µg of PRMT7 antibody (GTx116570) 7.5% SDS-PAGE The immunoprecipitated PRMT7 protein was detected by PRMT7 antibody (GTx116570) diluted at 1:1000. EasyBlot anti-rabbit IgG (GTx221666-01) was used as a secondary reagent.


**GTx116570 ChIP assay Image**

Cross-linked ChIP was performed with NIH3T3 chromatin extract and 5 µg of either control rabbit IgG or anti-PRMT7 antibody. The precipitated DNA was detected by PCR with primer set targeting to Apex2. ChIP experiment and primer designs are based on [J Biol Chem. 2012 Aug 24;287\(35\):29801-14.](#)


**GTx116570 ICC/IF Image**

PRMT7 antibody detects PRMT7 protein at cytoplasm and nucleus by immunofluorescent analysis. Sample: HeLa cells were fixed in 4% paraformaldehyde at RT for 15 min. Green: PRMT7 protein stained by PRMT7 antibody (GTx116570) diluted at 1:500. Blue: Hoechst 33342 staining.


**GTx116570 IHC-P Image**

Immunohistochemical analysis of paraffin-embedded C2C12 xenograft, using PRMT7(GTx116570) antibody at 1:500 dilution. Antigen Retrieval: Trilogy™ (EDTA based, pH 8.0) buffer, 15min



For full product information, images and publications, please visit our [website](#).