

## PPP2R2D antibody [N2C3]

Cat. No. GTX116609

Host	Rabbit
Clonality	Polyclonal
Isotype	IgG
Applications	WB, IHC-P
Reactivity	Human, Mouse, Rat

References ( 5 )

Package

100 µl, 25 µl

## Applications

## Application Note

\*Optimal dilutions/concentrations should be determined by the researcher.

Suggested dilution	Recommended dilution
WB	1:500-1:10000
IHC-P	1:100-1:1000

Not tested in other applications.

Calculated MW 52 kDa. ( [Note](#) )

## Product Note

Based on sequence homology, this antibody may cross react with other PPP2R2A, PPP2R2B, and PPP2R2C family members. KO/KD validation is based on published data (PMID: 36241614).

## Properties

Form	Liquid
Buffer	PBS, 20% Glycerol
Preservative	0.025% ProClin 300
Storage	Store as concentrated solution. Centrifuge briefly prior to opening vial. For short-term storage (1-2 weeks), store at 4°C. For long-term storage, aliquot and store at -20°C or below. Avoid multiple freeze-thaw cycles.
Concentration	0.5 mg/ml (Please refer to the vial label for the specific concentration.)
Immunogen	Recombinant protein encompassing a sequence within the center region of human PPP2R2D. The exact sequence is proprietary.
Purification	Purified by antigen-affinity chromatography.
Conjugation	Unconjugated

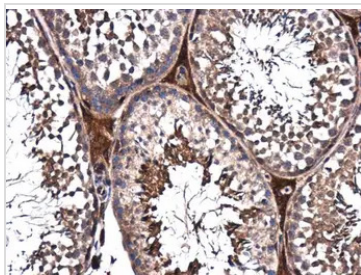


For full product information, images and publications, please visit our [website](#).

For laboratory research use only. Not for any clinical, therapeutic, or diagnostic use in humans or animals. Not for animal or human consumption.

**Note**

Purchasers shall not, and agree not to enable third parties to, analyze, copy, reverse engineer or otherwise attempt to determine the structure or sequence of the product.

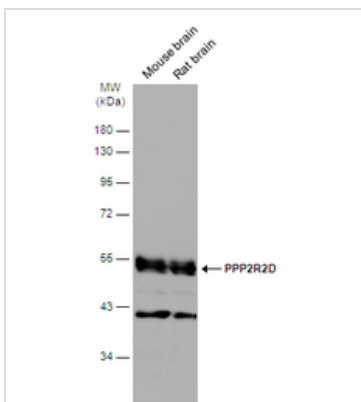
**DATA IMAGES**

**GTKX116609 IHC-P Image**

PPP2R2D antibody [N2C3] detects PPP2R2D protein at cytoplasm in mouse testis by immunohistochemical analysis.

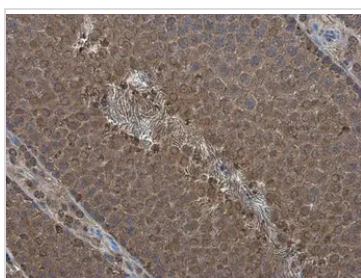
Sample: Paraffin-embedded mouse testis.

PPP2R2D antibody [N2C3] (GTKX116609) diluted at 1:500.

Antigen Retrieval: Citrate buffer, pH 6.0, 15 min


**GTKX116609 WB Image**

Various tissue extracts (50 µg) were separated by 10% SDS-PAGE, and the membrane was blotted with PPP2R2D antibody [N2C3] (GTKX116609) diluted at 1:5000. The HRP-conjugated anti-rabbit IgG antibody (GTKX213110-01) was used to detect the primary antibody.

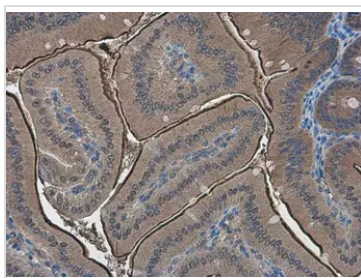

**GTKX116609 IHC-P Image**

PPP2R2D antibody [N2C3] detects PPP2R2D protein at cytoplasm in rat testis by immunohistochemical analysis.

Sample: Paraffin-embedded rat testis.

PPP2R2D antibody [N2C3] (GTKX116609) diluted at 1:500.

Antigen Retrieval: Citrate buffer, pH 6.0, 15 min


**GTKX116609 IHC-P Image**

PPP2R2D antibody [N2C3] detects PPP2R2D protein at cytoplasm in mouse duodenum by immunohistochemical analysis.

Sample: Paraffin-embedded mouse duodenum.

PPP2R2D antibody [N2C3] (GTKX116609) diluted at 1:500.

Antigen Retrieval: Citrate buffer, pH 6.0, 15 min



For full product information, images and publications, please visit our [website](https://www.genetex.com).