

Presenilin 2 antibody

Cat. No. GTX11661

Host	Rabbit
Clonality	Polyclonal
Isotype	IgG
Applications	WB, IHC-P
Reactivity	Human, Mouse, Rat

References (1)

Package

100 µg

Applications

Application Note

*Optimal dilutions/concentrations should be determined by the researcher.

Suggested dilution	Recommended dilution
WB	0.1-0.5µg/ml
IHC-P	0.5-1µg/ml

Not tested in other applications.

Calculated MW 50.14 kDa. ([Note](#))

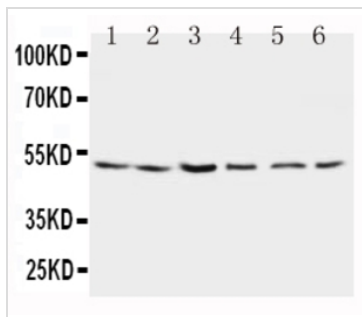
Properties

Form	Liquid
Buffer	0.1% Na ₂ HPO ₄ , 0.45% NaCl, 2.5% BSA
Preservative	0.025% Thimerosal, 0.025% Sodium azide
Storage	Store as concentrated solution. Centrifuge briefly prior to opening vial. For short-term storage (1-2 weeks), store at 4°C. For long-term storage, aliquot and store at -20°C or below. Avoid multiple freeze-thaw cycles.
Concentration	500 µg/ml (Please refer to the vial label for the specific concentration.)
Immunogen	A synthetic peptide corresponding to a sequence at the N-terminus of human Presenilin 2(39-51aa EDGENTAQWRSQE), different from the related mouse and rat sequences by two amino acids.
Purification	Purified by antigen-affinity chromatography
Conjugation	Unconjugated
Note	For laboratory research use only. Not for any clinical, therapeutic, or diagnostic use in humans or animals. Not for animal or human consumption. Purchasers shall not, and agree not to enable third parties to, analyze, copy, reverse engineer or otherwise attempt to determine the structure or sequence of the product.



For full product information, images and publications, please visit our [website](#).

DATA IMAGES

**GTX11661 WB Image**

WB analysis of various samples using GTX11661 Presenilin 2 antibody.

Lane 1 : rat brain tissue lysate

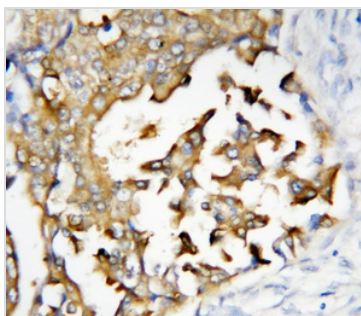
Lane 2 : rat brain tissue lysate

Lane 3 : MCF-7 cell lysate

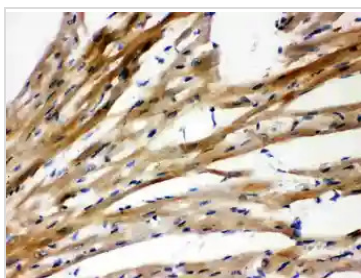
Lane 4 : HeLa cell lysate

Lane 5 : SMMC cell lysate

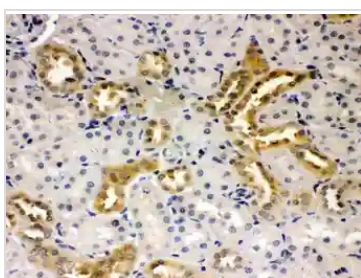
Lane 6 : CEM cell lysate

**GTX11661 IHC-P Image**

IHC-P analysis of human mammary cancer tissue using GTX11661 Presenilin 2 antibody.

**GTX11661 IHC-P Image**

IHC-P analysis of rat cardiac muscle tissue using GTX11661 Presenilin 2 antibody.

**GTX11661 IHC-P Image**

IHC-P analysis of rat kidney tissue using GTX11661 Presenilin 2 antibody.



For full product information, images and publications, please visit our [website](#).