

PTBP2 antibody

Cat. No. GTX116704

Host	Rabbit
Clonality	Polyclonal
Isotype	IgG
Applications	WB, ICC/IF, IHC-P
Reactivity	Human, Mouse, Rat

Package
100 µl, 25 µl

Applications

Application Note

*Optimal dilutions/concentrations should be determined by the researcher.

Suggested dilution	Recommended dilution
WB	1:500-1:3000
ICC/IF	1:100-1:1000
IHC-P	1:100-1:1000

Not tested in other applications.

Calculated MW 57 kDa. ([Note](#))

Properties

Form	Liquid
Buffer	PBS, 20% Glycerol
Preservative	0.01% Thimerosal
Storage	Store as concentrated solution. Centrifuge briefly prior to opening vial. For short-term storage (1-2 weeks), store at 4°C. For long-term storage, aliquot and store at -20°C or below. Avoid multiple freeze-thaw cycles.
Concentration	1 mg/ml (Please refer to the vial label for the specific concentration.)
Immunogen	Recombinant protein encompassing a sequence within the center region of human PTBP2. The exact sequence is proprietary.
Purification	Purified by antigen-affinity chromatography.
Conjugation	Unconjugated

Note

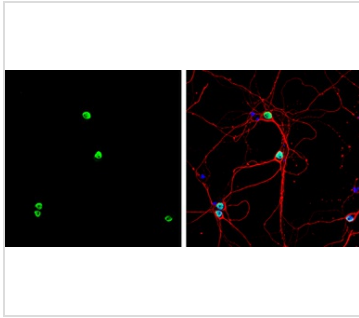
For laboratory research use only. Not for any clinical, therapeutic, or diagnostic use in humans or animals. Not for animal or human consumption.

Purchasers shall not, and agree not to enable third parties to, analyze, copy, reverse engineer or otherwise attempt to determine the structure or sequence of the product.



For full product information, images and publications, please visit our [website](#).

DATA IMAGES



GTx116704 ICC/IF Image

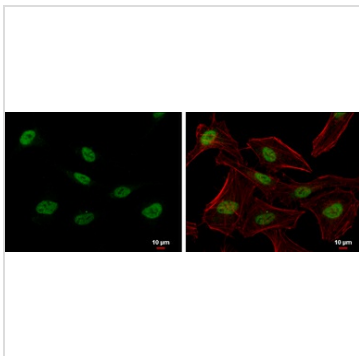
PTBP2 antibody detects PTBP2 protein by immunofluorescent analysis.

Sample: DIV9 rat E18 primary hippocampal neuron cells were fixed in 4% paraformaldehyde at RT for 15 min.

Green: PTBP2 stained by PTBP2 antibody (GTx116704) diluted at 1:500.

Red: beta Tubulin 3/ Tuj1, stained by beta Tubulin 3/ Tuj1 antibody [GT11710] (GTx631836) diluted at 1:500.

Blue: Fluoroshield with DAPI (GTx30920).



GTx116704 ICC/IF Image

PTBP2 antibody detects polypyrimidine tract binding protein 2 protein at nucleus by immunofluorescent analysis.

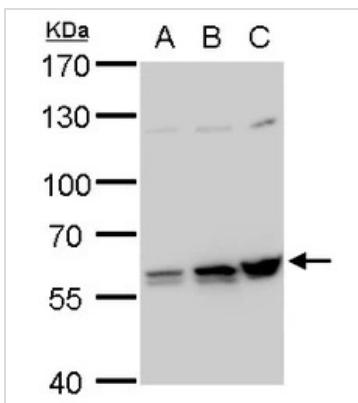
Sample: HeLa cells were fixed in 4% paraformaldehyde at RT for 15 min.

Green: polypyrimidine tract binding protein 2 protein stained by PTBP2 antibody (GTx116704) diluted at 1:500.

Red: phalloidin, a cytoskeleton marker, diluted at 1:200.

Blue: Hoechst 33342 staining.

Scale bar = 10 μm.



GTx116704 WB Image

PTBP2 antibody detects PTBP2 protein by western blot analysis.

A. 30 μg A549 whole cell lysate/extract

B. 30 μg H1299 whole cell lysate/extract

C. 30 μg HCT116 whole cell lysate/extract

7.5 % SDS-PAGE

PTBP2 antibody (GTx116704) dilution: 1:2000



GTx116704 IHC-P Image

PTBP2 antibody detects PTBP2 protein at nucleus on mouse hind brain by immunohistochemical analysis.

Sample: Paraffin-embedded mouse hind brain.

PTBP2 antibody (GTx116704) dilution: 1:500.

Antigen Retrieval: Trilogy™ (EDTA based, pH 8.0) buffer, 15min



For full product information, images and publications, please visit our [website](https://www.genetex.com).