

PTBP2 antibody

Cat. No. GTX116704

| | |
|---------------------|-------------------|
| Host | Rabbit |
| Clonality | Polyclonal |
| Isotype | IgG |
| Applications | WB, ICC/IF, IHC-P |
| Reactivity | Human, Mouse, Rat |

Package
100 µl, 25 µl

Applications

Application Note

*Optimal dilutions/concentrations should be determined by the researcher.

| Suggested dilution | Recommended dilution |
|--------------------|----------------------|
| WB | 1:500-1:3000 |
| ICC/IF | 1:100-1:1000 |
| IHC-P | 1:100-1:1000 |

Not tested in other applications.

Calculated MW 57 kDa. ([Note](#))

Properties

| | |
|----------------------|--|
| Form | Liquid |
| Buffer | PBS, 20% Glycerol |
| Preservative | 0.01% Thimerosal |
| Storage | Store as concentrated solution. Centrifuge briefly prior to opening vial. For short-term storage (1-2 weeks), store at 4°C. For long-term storage, aliquot and store at -20°C or below. Avoid multiple freeze-thaw cycles. |
| Concentration | 1 mg/ml (Please refer to the vial label for the specific concentration.) |
| Immunogen | Recombinant protein encompassing a sequence within the center region of human PTBP2. The exact sequence is proprietary. |
| Purification | Purified by antigen-affinity chromatography. |
| Conjugation | Unconjugated |

Note

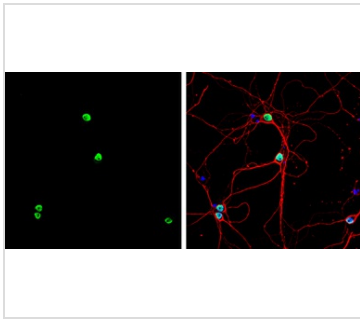
For laboratory research use only. Not for any clinical, therapeutic, or diagnostic use in humans or animals. Not for animal or human consumption.

Purchasers shall not, and agree not to enable third parties to, analyze, copy, reverse engineer or otherwise attempt to determine the structure or sequence of the product.



For full product information, images and publications, please visit our [website](#).

DATA IMAGES

**GTX116704 ICC/IF Image**

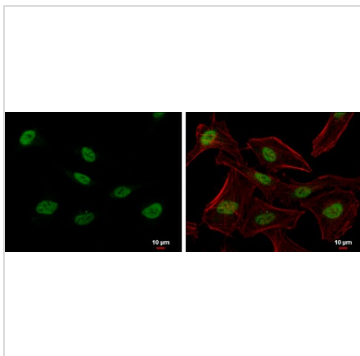
PTBP2 antibody detects PTBP2 protein by immunofluorescent analysis.

Sample: DIV9 rat E18 primary hippocampal neuron cells were fixed in 4% paraformaldehyde at RT for 15 min.

Green: PTBP2 stained by PTBP2 antibody (GTX116704) diluted at 1:500.

Red: beta Tubulin 3/ Tuj1, stained by beta Tubulin 3/ Tuj1 antibody [GT11710] (GTX631836) diluted at 1:500.

Blue: Fluoroshield with DAPI (GTX30920).

**GTX116704 ICC/IF Image**

PTBP2 antibody detects polypyrimidine tract binding protein 2 protein at nucleus by immunofluorescent analysis.

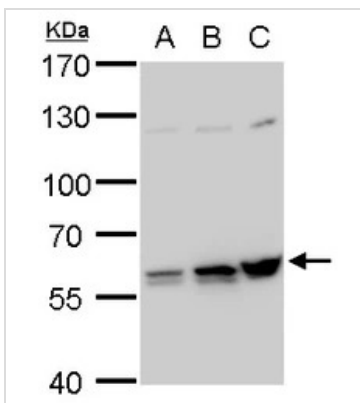
Sample: HeLa cells were fixed in 4% paraformaldehyde at RT for 15 min.

Green: polypyrimidine tract binding protein 2 protein stained by PTBP2 antibody (GTX116704) diluted at 1:500.

Red: phalloidin, a cytoskeleton marker, diluted at 1:200.

Blue: Hoechst 33342 staining.

Scale bar = 10 μm.

**GTX116704 WB Image**

PTBP2 antibody detects PTBP2 protein by western blot analysis.

A. 30 μg A549 whole cell lysate/extract

B. 30 μg H1299 whole cell lysate/extract

C. 30 μg HCT116 whole cell lysate/extract

7.5 % SDS-PAGE

PTBP2 antibody (GTX116704) dilution: 1:2000

**GTX116704 IHC-P Image**

PTBP2 antibody detects PTBP2 protein at nucleus on mouse hind brain by immunohistochemical analysis.

Sample: Paraffin-embedded mouse hind brain.

PTBP2 antibody (GTX116704) dilution: 1:500.

Antigen Retrieval: Trilogy™ (EDTA based, pH 8.0) buffer, 15min



For full product information, images and publications, please visit our [website](#).