

# SETDB2 antibody [N1N2], N-term

**Cat. No. GTX116932**

<b>Host</b>	Rabbit
<b>Clonality</b>	Polyclonal
<b>Isotype</b>	IgG
<b>Applications</b>	WB, ICC/IF, IP
<b>Reactivity</b>	Human

**Package**  
100 µl, 25 µl

## Applications

### Application Note

\*Optimal dilutions/concentrations should be determined by the researcher.

Suggested dilution	Recommended dilution
WB	1:500-1:3000
ICC/IF	1:100-1:1000
IP	1:100-1:500

Not tested in other applications.

**Calculated MW** 82 kDa. ( [Note](#) )

## Properties

<b>Form</b>	Liquid
<b>Buffer</b>	PBS, 20% Glycerol
<b>Preservative</b>	0.01% Thimerosal
<b>Storage</b>	Store as concentrated solution. Centrifuge briefly prior to opening vial. For short-term storage (1-2 weeks), store at 4°C. For long-term storage, aliquot and store at -20°C or below. Avoid multiple freeze-thaw cycles.
<b>Concentration</b>	1 mg/ml (Please refer to the vial label for the specific concentration.)
<b>Immunogen</b>	Recombinant protein encompassing a sequence within the N-terminus region of human SETDB2. The exact sequence is proprietary.
<b>Purification</b>	Purified by antigen-affinity chromatography.
<b>Conjugation</b>	Unconjugated

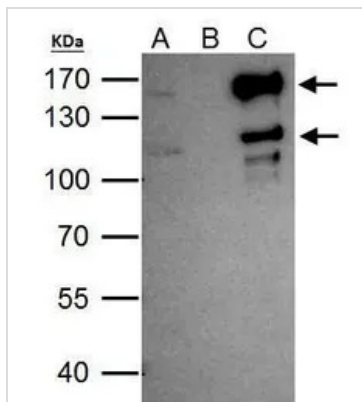
### Note

For laboratory research use only. Not for any clinical, therapeutic, or diagnostic use in humans or animals. Not for animal or human consumption.

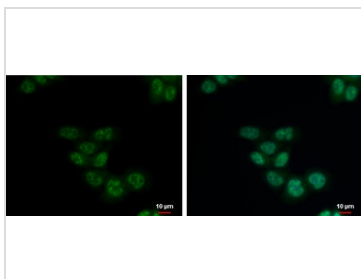
Purchasers shall not, and agree not to enable third parties to, analyze, copy, reverse engineer or otherwise attempt to determine the structure or sequence of the product.



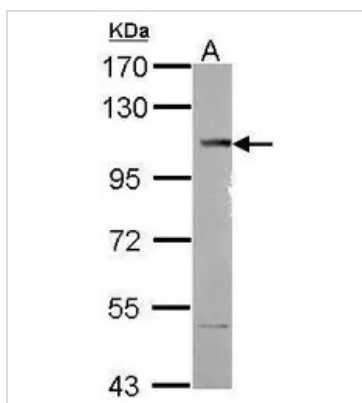
For full product information, images and publications, please visit our [website](#).

**DATA IMAGES**

**GTx116932 IP Image**

SETDB2 antibody immunoprecipitates SETDB2 protein in IP experiments. IP Sample: HeLa whole cell lysate/extract A. 40 µg HeLa whole cell lysate/extract B. Control with 2 µg of preimmune rabbit IgG C. Immunoprecipitation of SETDB2 protein by 2 µg of SETDB2 antibody (GTx116932) 7.5% SDS-PAGE The immunoprecipitated SETDB2 protein was detected by SETDB2 antibody (GTx116932) diluted at 1:1000. EasyBlot anti-rabbit IgG (GTx221666-01) was used as a secondary reagent.


**GTx116932 ICC/IF Image**

SETDB2 antibody [N1N2], N-term detects SETDB2 protein at nucleus by immunofluorescent analysis. Sample: HCT116 cells were fixed in 4% paraformaldehyde at RT for 15 min. Green: SETDB2 protein stained by SETDB2 antibody [N1N2], N-term (GTx116932) diluted at 1:500. Blue: Hoechst 33342 staining. Scale bar = 10 µm.


**GTx116932 WB Image**

Sample (30 ug of whole cell lysate)  
A: SK-N-SH  
7.5% SDS PAGE  
GTx116932 diluted at 1:1000



For full product information, images and publications, please visit our [website](https://www.genetex.com).