

IL13 antibody

Cat. No. GTX11712

| | |
|---------------------|------------|
| Host | Rabbit |
| Clonality | Polyclonal |
| Isotype | IgG |
| Applications | WB |
| Reactivity | Rat |

Package
100 µg

Applications

Application Note

*Optimal dilutions/concentrations should be determined by the researcher.

| Suggested dilution | Recommended dilution |
|--------------------|----------------------|
| WB | 0.1-0.5µg/ml |

Not tested in other applications.

Calculated MW 14 kDa. ([Note](#))

Properties

| | |
|----------------------|--|
| Form | Liquid |
| Buffer | 0.1% Na ₂ HPO ₄ , 0.45% NaCl, 2.5% BSA |
| Preservative | 0.025% Thimerosal, 0.025% Sodium azide |
| Storage | Store as concentrated solution. Centrifuge briefly prior to opening vial. For short-term storage (1-2 weeks), store at 4°C. For long-term storage, aliquot and store at -20°C or below. Avoid multiple freeze-thaw cycles. |
| Concentration | 500 µg/ml (Please refer to the vial label for the specific concentration.) |
| Immunogen | A synthetic peptide corresponding to a sequence in the middle region of rat IL-13(80-102aa CNAIHRTQRILNGLCNQKASDVA). |
| Purification | Purified by antigen-affinity chromatography |
| Conjugation | Unconjugated |

Note

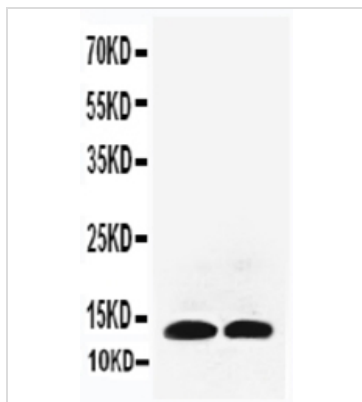
For laboratory research use only. Not for any clinical, therapeutic, or diagnostic use in humans or animals. Not for animal or human consumption.

Purchasers shall not, and agree not to enable third parties to, analyze, copy, reverse engineer or otherwise attempt to determine the structure or sequence of the product.



For full product information, images and publications, please visit our [website](#).

DATA IMAGES



GTX11712 WB Image

WB analysis of various samples using GTX11712 IL13 antibody.

Lane 1 : Recombinant rat IL-13 protein 5ng

Lane 2 : Recombinant rat IL-13 protein 2.5ng

Dilution : 0.5 µg/mL



For full product information, images and publications, please visit our [website](#).