

## FABP5 antibody

Cat. No. GTX11725

|                     |            |
|---------------------|------------|
| <b>Host</b>         | Rabbit     |
| <b>Clonality</b>    | Polyclonal |
| <b>Isotype</b>      | IgG        |
| <b>Applications</b> | WB, IHC-P  |
| <b>Reactivity</b>   | Human      |

Package  
100 µg

## Applications

## Application Note

\*Optimal dilutions/concentrations should be determined by the researcher.

| Suggested dilution | Recommended dilution |
|--------------------|----------------------|
| WB                 | 0.1-0.5µg/ml         |
| IHC-P              | 0.5-1µg/ml           |

Not tested in other applications.

**Calculated MW** 15.16 kDa. ([Note](#))

## Properties

|                      |  |
|----------------------|--|
| <b>Form</b>          | Liquid   |
| <b>Buffer</b>        | 0.1% Na <sub>2</sub> HPO <sub>4</sub> , 0.45% NaCl, 2.5% BSA   |
| <b>Preservative</b>  | 0.025% Thimerosal, 0.025% Sodium azide   |
| <b>Storage</b>       | Store as concentrated solution. Centrifuge briefly prior to opening vial. For short-term storage (1-2 weeks), store at 4°C. For long-term storage, aliquot and store at -20°C or below. Avoid multiple freeze-thaw cycles. |
| <b>Concentration</b> | 500 µg/ml (Please refer to the vial label for the specific concentration.)   |
| <b>Immunogen</b>     | A synthetic peptide corresponding to a sequence at the N-terminus of human Fatty Acid Binding Protein 5(2-16aa ATVQQLEGRWRLVDS).   |
| <b>Purification</b>  | Purified by antigen-affinity chromatography  |
| <b>Conjugation</b>   | Unconjugated   |

## Note

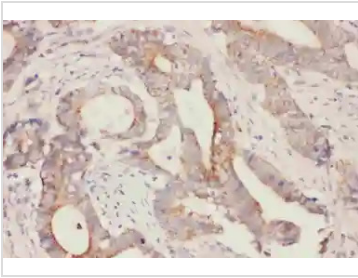
For laboratory research use only. Not for any clinical, therapeutic, or diagnostic use in humans or animals. Not for animal or human consumption.

Purchasers shall not, and agree not to enable third parties to, analyze, copy, reverse engineer or otherwise attempt to determine the structure or sequence of the product.

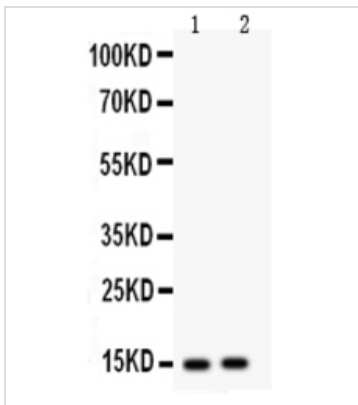


For full product information, images and publications, please visit our [website](#).

## DATA IMAGES

**GTX11725 IHC-P Image**

IHC-P analysis of human intestinal cancer tissue using GTX11725 FABP5 antibody.

**GTX11725 WB Image**

WB analysis of various samples using GTX11725 FABP5 antibody.

Lane 1 : HeLa whole cell lysate at 40ug

Lane 2 : HepG2 whole cell lysate at 40ug

Dilution : 0.5 µg/mL



For full product information, images and publications, please visit our [website](#).