

## p53 (mono-methyl Lys372) antibody

Cat. No. GTX117515

Host	Rabbit
Clonality	Polyclonal
Isotype	IgG
Applications	WB, ICC/IF, IHC-P
Reactivity	Human, Frog, Squirrel

References ( 2 )

Package

100 µl, 25 µl

## Applications

## Application Note

\*Optimal dilutions/concentrations should be determined by the researcher.

Suggested dilution	Recommended dilution
WB	1:500-1:3000
ICC/IF	1:100-1:1000
IHC-P	1:100-1:1000

Not tested in other applications.

Calculated MW 44 kDa. ( [Note](#) )

## Properties

Form	Liquid
Buffer	PBS, 1% BSA, 20% Glycerol
Preservative	0.025% ProClin 300
Storage	Store as concentrated solution. Centrifuge briefly prior to opening vial. For short-term storage (1-2 weeks), store at 4°C. For long-term storage, aliquot and store at -20°C or below. Avoid multiple freeze-thaw cycles.
Concentration	1.43 mg/ml (Please refer to the vial label for the specific concentration.)
Immunogen	Carrier-protein conjugated synthetic peptide surrounding mono-methyl Lys372 of human p53. The exact sequence is proprietary.
Purification	Purified by antigen-affinity chromatography.
Conjugation	Unconjugated

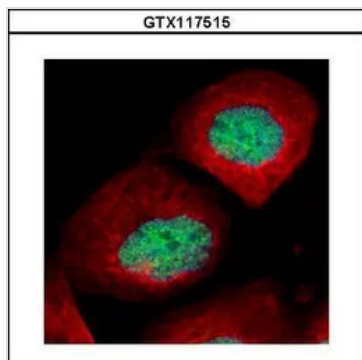
## Note

For laboratory research use only. Not for any clinical, therapeutic, or diagnostic use in humans or animals. Not for animal or human consumption.

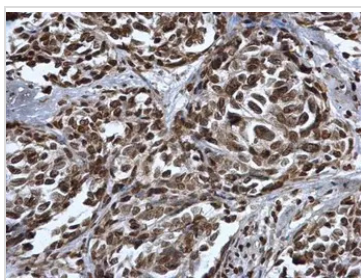
Purchasers shall not, and agree not to enable third parties to, analyze, copy, reverse engineer or otherwise attempt to determine the structure or sequence of the product.



For full product information, images and publications, please visit our [website](#).

**DATA IMAGES**

**GTx117515 ICC/IF Image**

Confocal immunofluorescence analysis (Olympus FV10i) of paraformaldehyde-fixed U2OS, using p53 (mono-methyl Lys372)(GTx117515) antibody (Green) at 1:500 dilution. Alpha-tubulin filaments were labeled with GTx11304 (Red) at 1:2000.

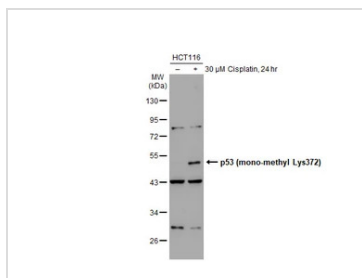

**GTx117515 IHC-P Image**

p53 (mono-methyl Lys372) antibody detects p53 (mono-methyl Lys372) protein at cytoplasm and nucleus in human cervical cancer by immunohistochemical analysis.

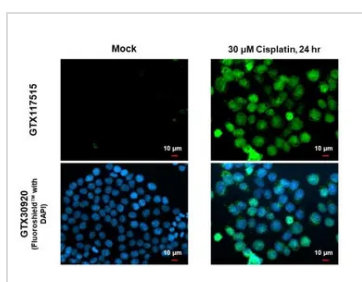
Sample: Paraffin-embedded human cervical cancer.

p53 (mono-methyl Lys372) antibody (GTx117515) diluted at 1:500.

Antigen Retrieval: Citrate buffer, pH 6.0, 15 min


**GTx117515 WB Image**

Untreated (-) and treated (+) HCT-116 whole cell extracts (30 µg) were separated by 10% SDS-PAGE, and the membrane was blotted with p53 (mono-methyl Lys372) antibody (GTx117515) diluted at 1:500. The HRP-conjugated anti-rabbit IgG antibody (GTx213110-01) was used to detect the primary antibody.


**GTx117515 ICC/IF Image**

p53 (mono-methyl Lys372) antibody detects p53 (mono-methyl Lys372) protein at nucleus and endoplasmic reticulum by immunofluorescent analysis.

Sample: Mock and treated HCT116 cells were fixed in 4% paraformaldehyde at RT for 15 min.

Green: p53 (mono-methyl Lys372) stained by p53 (mono-methyl Lys372) antibody (GTx117515) diluted at 1:500.

Blue: Fluoroshield with DAPI (GTx30920).



For full product information, images and publications, please visit our [website](https://www.genetex.com).