

NUDC antibody

Cat. No. GTX117622

Host	Rabbit
Clonality	Polyclonal
Isotype	IgG
Applications	WB, ICC/IF
Reactivity	Human, Mouse

Package
100 µl, 25 µl

Applications

Application Note

*Optimal dilutions/concentrations should be determined by the researcher.

Suggested dilution	Recommended dilution
WB	1:500-1:3000
ICC/IF	1:100-1:1000

Not tested in other applications.

Calculated MW 38 kDa. ([Note](#))

Properties

Form	Liquid
Buffer	PBS, 1% BSA, 20% Glycerol
Preservative	0.01% Thimerosal
Storage	Store as concentrated solution. Centrifuge briefly prior to opening vial. For short-term storage (1-2 weeks), store at 4°C. For long-term storage, aliquot and store at -20°C or below. Avoid multiple freeze-thaw cycles.
Concentration	1 mg/ml (Please refer to the vial label for the specific concentration.)
Immunogen	Recombinant protein encompassing a sequence within the center region of human NUDC. The exact sequence is proprietary.
Purification	Purified by antigen-affinity chromatography.
Conjugation	Unconjugated

Note

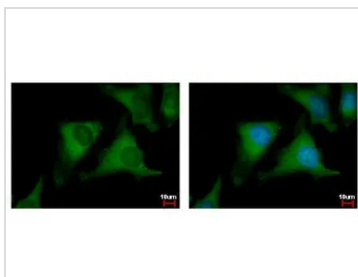
For laboratory research use only. Not for any clinical, therapeutic, or diagnostic use in humans or animals. Not for animal or human consumption.

Purchasers shall not, and agree not to enable third parties to, analyze, copy, reverse engineer or otherwise attempt to determine the structure or sequence of the product.



For full product information, images and publications, please visit our [website](#).

DATA IMAGES



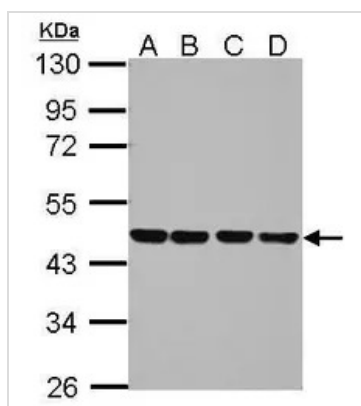
GTX117622 ICC/IF Image

NUDC antibody detects NUDC protein at cytoplasm by immunofluorescent analysis.

Sample: HeLa cells were fixed in 4% paraformaldehyde at RT for 15 min.

Green: NUDC protein stained by NUDC antibody (GTX117622) diluted at 1:500.

Blue: Hoechst 33342 staining.



GTX117622 WB Image

Sample (30 ug of whole cell lysate)

A: 293T

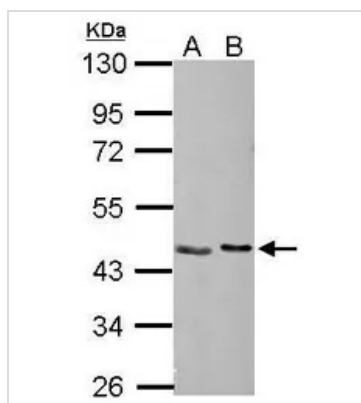
B: A431

C: HeLa

D: HepG2

10% SDS PAGE

GTX117622 diluted at 1:1000



GTX117622 WB Image

Sample (30 ug of whole cell lysate)

A: NIH-3T3

B: BCL-1

10% SDS PAGE

GTX117622 diluted at 1:1000



For full product information, images and publications, please visit our [website](https://www.genetex.com).