

DHFR antibody

Cat. No. GTX117705

Host	Rabbit
Clonality	Polyclonal
Isotype	IgG
Applications	WB, ICC/IF, IHC-P, IP
Reactivity	Human, Rat

References (2)

★★★★★ Review (1)

Package

100 µl, 25 µl

Applications

Application Note

*Optimal dilutions/concentrations should be determined by the researcher.

Suggested dilution	Recommended dilution
WB	1:500-1:3000
ICC/IF	1:100-1:1000
IHC-P	1:100-1:1000
IP	1:100-1:500

Not tested in other applications.

Calculated MW 21 kDa. ([Note](#))

Product Note KO/KD validation is based on customer review data.

Properties

Form	Liquid
Buffer	PBS, 20% Glycerol
Preservative	0.025% ProClin 300
Storage	Store as concentrated solution. Centrifuge briefly prior to opening vial. For short-term storage (1-2 weeks), store at 4°C. For long-term storage, aliquot and store at -20°C or below. Avoid multiple freeze-thaw cycles.
Concentration	1.54 mg/ml (Please refer to the vial label for the specific concentration.)
Immunogen	Recombinant protein encompassing a sequence within the center region of human DHFR. The exact sequence is proprietary.
Purification	Purified by antigen-affinity chromatography.
Conjugation	Unconjugated



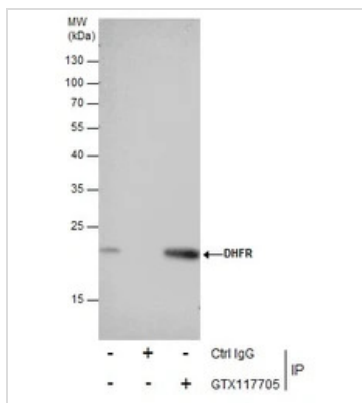
For full product information, images and publications, please visit our [website](#).

For laboratory research use only. Not for any clinical, therapeutic, or diagnostic use in humans or animals. Not for animal or human consumption.

Note

Purchasers shall not, and agree not to enable third parties to, analyze, copy, reverse engineer or otherwise attempt to determine the structure or sequence of the product.

DATA IMAGES

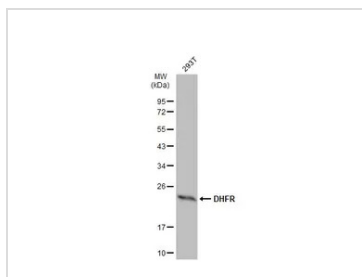


GTX117705 IP Image

Immunoprecipitation of DHFR protein from 293T whole cell extracts using 5 µg of DHFR antibody (GTX117705).

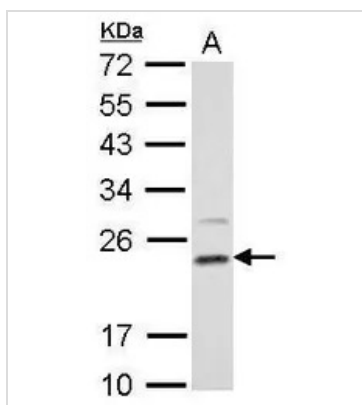
Western blot analysis was performed using DHFR antibody (GTX117705).

EasyBlot anti-Rabbit IgG (GTX221666-01) was used as a secondary reagent.



GTX117705 WB Image

Whole cell extract (30 µg) was separated by 12% SDS-PAGE, and the membrane was blotted with DHFR antibody (GTX117705) diluted at 1:1000. The HRP-conjugated anti-rabbit IgG antibody (GTX213110-01) was used to detect the primary antibody, and the signal was developed with Trident ECL plus-Enhanced.



GTX117705 WB Image

DHFR antibody detects DHFR protein by western blot analysis.

A. 30 µg PC-12 whole cell lysate/extract

12% SDS-PAGE

DHFR antibody (GTX117705) dilution: 1:1000

The HRP-conjugated anti-rabbit IgG antibody (GTX213110-01) was used to detect the primary antibody.



For full product information, images and publications, please visit our [website](https://www.genetex.com).