

ABCE1 antibody

Cat. No. GTX117706

Host	Rabbit
Clonality	Polyclonal
Isotype	IgG
Applications	WB, ICC/IF, IHC-P
Reactivity	Human

[References \(1 \)](#)

[Package](#)

100 µl, 25 µl

Applications

Application Note

*Optimal dilutions/concentrations should be determined by the researcher.

Suggested dilution	Recommended dilution
WB	1:500-1:3000
ICC/IF	1:100-1:1000
IHC-P	1:100-1:1000

Not tested in other applications.

Calculated MW 67 kDa. ([Note](#))

Properties

Form	Liquid
Buffer	0.1M Tris, 0.1M Glycine, 20% Glycerol
Preservative	0.01% Thimerosal
Storage	Store as concentrated solution. Centrifuge briefly prior to opening vial. For short-term storage (1-2 weeks), store at 4°C. For long-term storage, aliquot and store at -20°C or below. Avoid multiple freeze-thaw cycles.
Concentration	0.57 mg/ml (Please refer to the vial label for the specific concentration.)
Immunogen	Recombinant protein encompassing a sequence within the center region of human ABCE1. The exact sequence is proprietary.
Purification	Purified by antigen-affinity chromatography.
Conjugation	Unconjugated

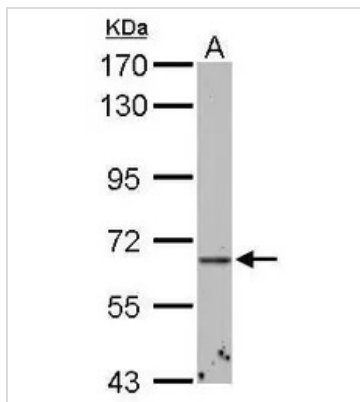
Note

For laboratory research use only. Not for any clinical, therapeutic, or diagnostic use in humans or animals. Not for animal or human consumption.

Purchasers shall not, and agree not to enable third parties to, analyze, copy, reverse engineer or otherwise attempt to determine the structure or sequence of the product.



For full product information, images and publications, please visit our [website](#).

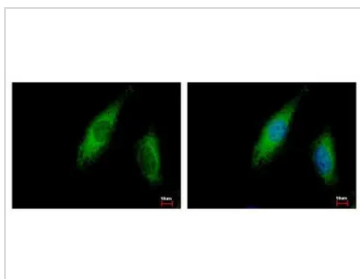
DATA IMAGES

GTX117706 WB Image

ABCE1 antibody detects ABCE1 protein by Western blot analysis.

A. 30 μ g K562 whole cell lysate/extract

7.5 % SDS-PAGE

ABCE1 antibody (GTX117706) dilution: 1:500

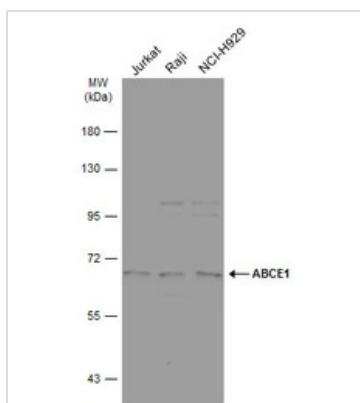

GTX117706 ICC/IF Image

ABCE1 antibody detects ABCE1 protein at cytoplasm by immunofluorescent analysis.

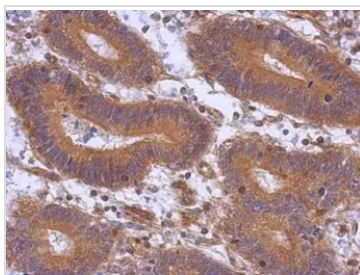
Sample: HeLa cells were fixed in 2% paraformaldehyde/culture medium at 37°C for 30 min.

Green: ABCE1 protein stained by ABCE1 antibody (GTX117706) diluted at 1:500.

Blue: Hoechst 33342 staining.


GTX117706 WB Image

Various whole cell extracts (30 μ g) were separated by 7.5% SDS-PAGE, and the membrane was blotted with ABCE1 antibody (GTX117706) diluted at 1:500. The HRP-conjugated anti-rabbit IgG antibody (GTX213110-01) was used to detect the primary antibody.


GTX117706 IHC-P Image

Immunohistochemical analysis of paraffin-embedded human colon carcinoma, using ABCE1(GTX117706) antibody at 1:500 dilution.

Antigen Retrieval: Trilogy™ (EDTA based, pH 8.0) buffer, 15min



For full product information, images and publications, please visit our [website](https://www.genetex.com).