

## MCTS1 antibody [N1C3]

Cat. No. GTX117793

Host	Rabbit
Clonality	Polyclonal
Isotype	IgG
Application	WB, IHC-P, IHC
Reactivity	Human, Mouse, Rat

Reference ( 4 )

★★★★★ Review ( 1 )

Package

100 µl, 25 µl

## APPLICATION

## Application Note

\*Optimal dilutions/concentrations should be determined by the researcher.

Suggested dilution	Recommended dilution
WB	1:500-1:3000
IHC-P	1:100-1:1000
IHC	Assay dependent

Not tested in other applications.

Calculated MW 21 kDa. ( [Note](#) )

## PROPERTIES

Form	Liquid
Buffer	PBS, 1% BSA, 20% Glycerol
Preservative	0.01% Thimerosal
Storage	Store as concentrated solution. Centrifuge briefly prior to opening vial. For short-term storage (1-2 weeks), store at 4°C. For long-term storage, aliquot and store at -20°C or below. Avoid multiple freeze-thaw cycles.
Concentration	1 mg/ml (Please refer to the vial label for the specific concentration.)
Immunogen	Recombinant protein encompassing a sequence within the center region of human MCTS1. The exact sequence is proprietary.
Purification	Purified by antigen-affinity chromatography.
Conjugation	Unconjugated

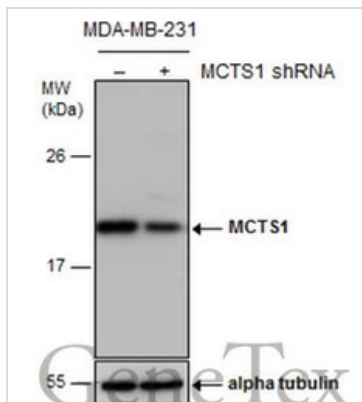
## Note

For laboratory research use only. Not for any clinical, therapeutic, or diagnostic use in humans or animals. Not for animal or human consumption.

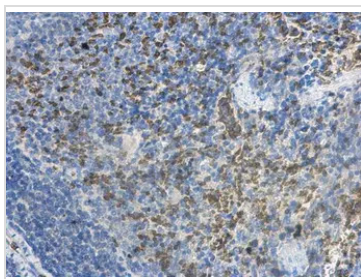
Purchasers shall not, and agree not to enable third parties to, analyze, copy, reverse engineer or otherwise attempt to determine the structure or sequence of the product.



For full product information, images and publications, please visit our [website](#).

**DATA IMAGES**

**GTx117793 WB Image**

Non-transfected (-) and transfected (+) MDA-MB-231 whole cell extracts (30 µg) were separated by 12% SDS-PAGE, and the membrane was blotted with MCTS1 antibody [N1C3] (GTx117793) diluted at 1:500. The HRP-conjugated anti-rabbit IgG antibody (GTx213110-01) was used to detect the primary antibody.

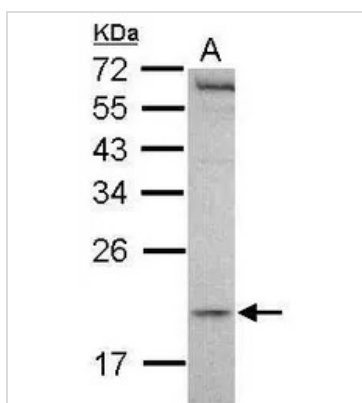

**GTx117793 IHC-P Image**

MCTS1 antibody [N1C3] detects MCTS1 protein at cytoplasm in rat spleen by immunohistochemical analysis.

Sample: Paraffin-embedded rat spleen.

MCTS1 antibody [N1C3] (GTx117793) diluted at 1:500.

Antigen Retrieval: Citrate buffer, pH 6.0, 15 min


**GTx117793 WB Image**

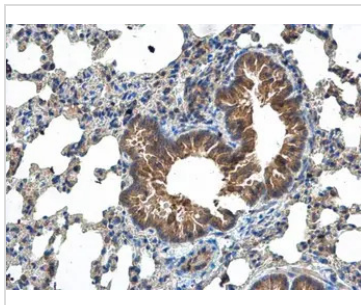
Sample (30 µg of whole cell lysate)

A: Jurkat

12% SDS PAGE

GTx117793 diluted at 1:1000

The HRP-conjugated anti-rabbit IgG antibody (GTx213110-01) was used to detect the primary antibody.


**GTx117793 IHC-P Image**

MCTS1 antibody [N1C3] detects MCTS1 protein at cytoplasm in mouse lung by immunohistochemical analysis.

Sample: Paraffin-embedded mouse lung.

MCTS1 antibody [N1C3] (GTx117793) diluted at 1:500.

Antigen Retrieval: Citrate buffer, pH 6.0, 15 min



For full product information, images and publications, please visit our [website](https://www.genetex.com).