

# Fascin 1 antibody

**Cat. No. GTX117805**

<b>Host</b>	Rabbit
<b>Clonality</b>	Polyclonal
<b>Isotype</b>	IgG
<b>Application</b>	WB, ICC/IF, IHC-P
<b>Reactivity</b>	Human, Mouse

**Package**  
100 µl, 25 µl

## APPLICATION

### Application Note

\*Optimal dilutions/concentrations should be determined by the researcher.

Suggested dilution	Recommended dilution
WB	1:500-1:3000
ICC/IF	1:100-1:1000
IHC-P	1:100-1:1000

Not tested in other applications.

**Calculated MW** 55 kDa. ( [Note](#) )

## PROPERTIES

<b>Form</b>	Liquid
<b>Buffer</b>	PBS, 20% Glycerol
<b>Preservative</b>	0.01% Thimerosal
<b>Storage</b>	Store as concentrated solution. Centrifuge briefly prior to opening vial. For short-term storage (1-2 weeks), store at 4°C. For long-term storage, aliquot and store at -20°C or below. Avoid multiple freeze-thaw cycles.
<b>Concentration</b>	1 mg/ml (Please refer to the vial label for the specific concentration.)
<b>Immunogen</b>	Recombinant protein encompassing a sequence within the center region of human Fascin 1. The exact sequence is proprietary.
<b>Purification</b>	Purified by antigen-affinity chromatography.
<b>Conjugation</b>	Unconjugated

### Note

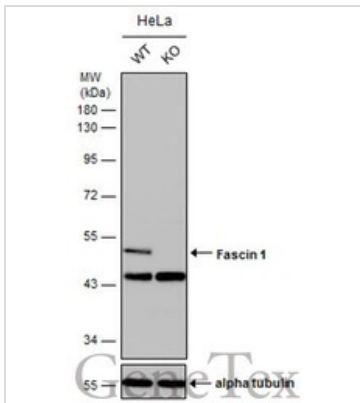
For laboratory research use only. Not for any clinical, therapeutic, or diagnostic use in humans or animals. Not for animal or human consumption.

Purchasers shall not, and agree not to enable third parties to, analyze, copy, reverse engineer or otherwise attempt to determine the structure or sequence of the product.



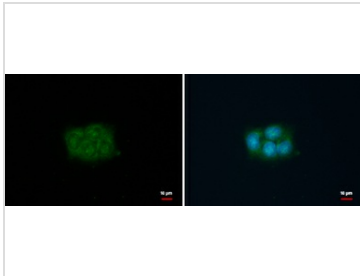
For full product information, images and publications, please visit our [website](#).

DATA IMAGES



**GTx117805 WB Image**

Wild-type (WT) and Fascin 1 knockout (KO) HeLa cell extracts (30  $\mu$ g) were separated by 10% SDS-PAGE, and the membrane was blotted with Fascin 1 antibody (GTx117805) diluted at 1:2000. The HRP-conjugated anti-rabbit IgG antibody (GTx213110-01) was used to detect the primary antibody.



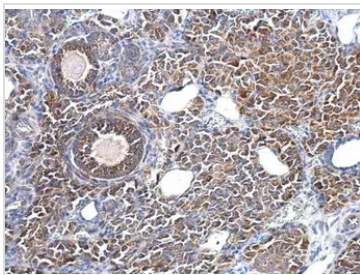
**GTx117805 ICC/IF Image**

FSCN1 antibody detects FSCN1 protein at cytoplasm by immunofluorescent analysis.

Sample: HCT116 cells were fixed in 100% MeOH for 5 min.

Green: FSCN1 protein stained by FSCN1 antibody (GTx117805) diluted at 1:500.

Blue: Hoechst 33342 staining.



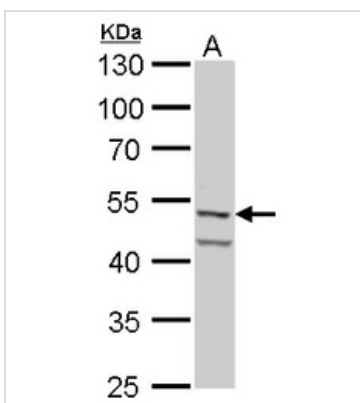
**GTx117805 IHC-P Image**

Fascin 1 antibody detects Fascin 1 protein at cytosol on mouse ovary by immunohistochemical analysis.

Sample: Paraffin-embedded mouse ovary.

Fascin 1 antibody (GTx117805) dilution: 1:500.

Antigen Retrieval: Trilogy™ (EDTA based, pH 8.0) buffer, 15min



**GTx117805 WB Image**

Fascin 1 antibody detects Fascin 1 protein by Western blot analysis.

A. 30  $\mu$ g HeLa whole cell lysate/extract

10 % SDS-PAGE

Fascin 1 antibody (GTx117805) dilution: 1:1000



For full product information, images and publications, please visit our [website](https://www.genetex.com).