

## Musashi 2 antibody [N1C1]

Cat. No. GTX117808

<b>Host</b>	Rabbit
<b>Clonality</b>	Polyclonal
<b>Isotype</b>	IgG
<b>Applications</b>	WB, ICC/IF, IHC-P, IHC-Fr, IP
<b>Reactivity</b>	Human, Mouse, Rat

References ( 2 )





 Review ( 1 )

Package

100 µl, 25 µl

## Applications

## Application Note

\*Optimal dilutions/concentrations should be determined by the researcher.

Suggested dilution	Recommended dilution
WB	1:500-1:3000
ICC/IF	Assay dependent
IHC-P	1:100-1:1000
IHC-Fr	1:100-1:1000
IP	Assay dependent

Not tested in other applications.

Calculated MW 35 kDa. ( [Note](#) )

Product Note KO/KD validation is based on published data (PMID: 26990993).

## Properties

<b>Form</b>	Liquid
<b>Buffer</b>	PBS, 1% BSA, 20% Glycerol
<b>Preservative</b>	0.01% Thimerosal
<b>Storage</b>	Store as concentrated solution. Centrifuge briefly prior to opening vial. For short-term storage (1-2 weeks), store at 4°C. For long-term storage, aliquot and store at -20°C or below. Avoid multiple freeze-thaw cycles.
<b>Concentration</b>	1 mg/ml (Please refer to the vial label for the specific concentration.)
<b>Immunogen</b>	Recombinant protein encompassing a sequence within the center region of human Musashi 2. The exact sequence is proprietary.
<b>Purification</b>	Purified by antigen-affinity chromatography.
<b>Conjugation</b>	Unconjugated



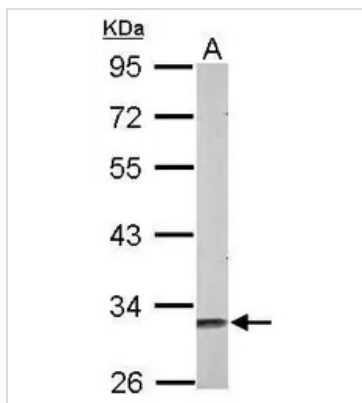
For full product information, images and publications, please visit our [website](#).

Date 2026 / 01 / 01 Page 1 of 2

For laboratory research use only. Not for any clinical, therapeutic, or diagnostic use in humans or animals. Not for animal or human consumption.

**Note**

Purchasers shall not, and agree not to enable third parties to, analyze, copy, reverse engineer or otherwise attempt to determine the structure or sequence of the product.

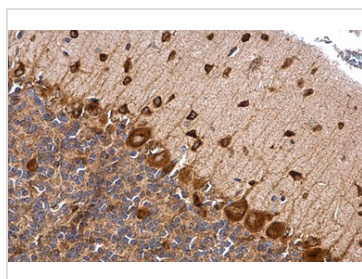
**DATA IMAGES**

**GTx117808 WB Image**

Sample (50 ug of whole cell lysate)

A: mouse brain

10% SDS PAGE

GTx117808 diluted at 1:1000

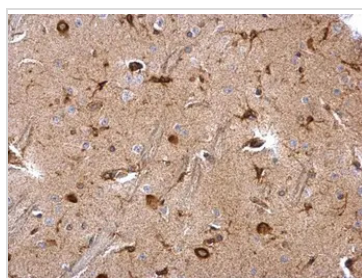

**GTx117808 IHC-P Image**

Musashi 2 antibody [N1C1] detects Musashi 2 protein at cytoplasm by immunohistochemical analysis.

Sample: Paraffin-embedded rat brain.

Musashi 2 stained by Musashi 2 antibody [N1C1] (GTx117808) diluted at 1:500.

Antigen Retrieval: Trilogy™ (EDTA based) buffer, 15min


**GTx117808 IHC-P Image**

Musashi 2 antibody [N1C1] detects Musashi 2 protein at cytosol on rat fore brain by immunohistochemical analysis.

Sample: Paraffin-embedded rat fore brain.

Musashi 2 antibody [N1C1] (GTx117808) dilution: 1:500.

Antigen Retrieval: Trilogy™ (EDTA based, pH 8.0) buffer, 15min



For full product information, images and publications, please visit our [website](https://www.genetex.com).