

Musashi 2 antibody [N1C1]

Cat. No. GTX117808

Host	Rabbit
Clonality	Polyclonal
Isotype	IgG
Applications	WB, ICC/IF, IHC-P, IHC-Fr, IP
Reactivity	Human, Mouse, Rat

References (2)





 Review (1)

Package

100 µl, 25 µl

Applications

Application Note

*Optimal dilutions/concentrations should be determined by the researcher.

Suggested dilution	Recommended dilution
WB	1:500-1:3000
ICC/IF	Assay dependent
IHC-P	1:100-1:1000
IHC-Fr	1:100-1:1000
IP	Assay dependent

Not tested in other applications.

Calculated MW 35 kDa. ([Note](#))

Product Note KO/KD validation is based on published data (PMID: 26990993).

Properties

Form	Liquid
Buffer	PBS, 1% BSA, 20% Glycerol
Preservative	0.01% Thimerosal
Storage	Store as concentrated solution. Centrifuge briefly prior to opening vial. For short-term storage (1-2 weeks), store at 4°C. For long-term storage, aliquot and store at -20°C or below. Avoid multiple freeze-thaw cycles.
Concentration	1 mg/ml (Please refer to the vial label for the specific concentration.)
Immunogen	Recombinant protein encompassing a sequence within the center region of human Musashi 2. The exact sequence is proprietary.
Purification	Purified by antigen-affinity chromatography.
Conjugation	Unconjugated



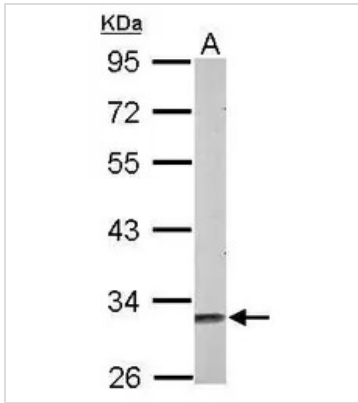
For full product information, images and publications, please visit our [website](#).

For laboratory research use only. Not for any clinical, therapeutic, or diagnostic use in humans or animals. Not for animal or human consumption.

Note

Purchasers shall not, and agree not to enable third parties to, analyze, copy, reverse engineer or otherwise attempt to determine the structure or sequence of the product.

DATA IMAGES



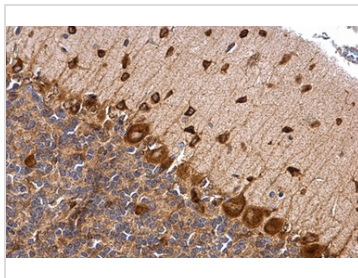
GTx117808 WB Image

Sample (50 ug of whole cell lysate)

A: mouse brain

10% SDS PAGE

GTx117808 diluted at 1:1000



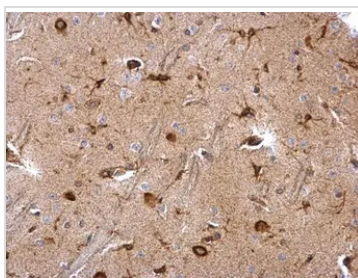
GTx117808 IHC-P Image

Musashi 2 antibody [N1C1] detects Musashi 2 protein at cytoplasm by immunohistochemical analysis.

Sample: Paraffin-embedded rat brain.

Musashi 2 stained by Musashi 2 antibody [N1C1] (GTx117808) diluted at 1:500.

Antigen Retrieval: Trilogy™ (EDTA based) buffer, 15min



GTx117808 IHC-P Image

Musashi 2 antibody [N1C1] detects Musashi 2 protein at cytosol on rat fore brain by immunohistochemical analysis.

Sample: Paraffin-embedded rat fore brain.

Musashi 2 antibody [N1C1] (GTx117808) dilution: 1:500.

Antigen Retrieval: Trilogy™ (EDTA based, pH 8.0) buffer, 15min



For full product information, images and publications, please visit our [website](https://www.genetex.com).