

## RNF133 antibody

Cat. No. GTX117869

Host	Rabbit
Clonality	Polyclonal
Isotype	IgG
Applications	WB, IHC-P
Reactivity	Human

Package  
100 µl, 25 µl

## Applications

## Application Note

\*Optimal dilutions/concentrations should be determined by the researcher.

Suggested dilution	Recommended dilution
WB	1:500-1:3000
IHC-P	1:100-1:1000

Not tested in other applications.

Calculated MW 42 kDa. ( [Note](#) )

## Properties

Form	Liquid
Buffer	PBS, 1% BSA, 20% Glycerol
Preservative	0.01% Thimerosal
Storage	Store as concentrated solution. Centrifuge briefly prior to opening vial. For short-term storage (1-2 weeks), store at 4°C. For long-term storage, aliquot and store at -20°C or below. Avoid multiple freeze-thaw cycles.
Concentration	1 mg/ml (Please refer to the vial label for the specific concentration.)
Immunogen	Recombinant protein encompassing a sequence within the center region of human RNF133. The exact sequence is proprietary.
Purification	Purified by antigen-affinity chromatography.
Conjugation	Unconjugated

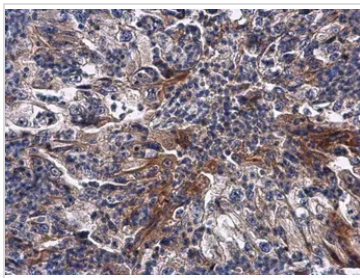
## Note

For laboratory research use only. Not for any clinical, therapeutic, or diagnostic use in humans or animals. Not for animal or human consumption.

Purchasers shall not, and agree not to enable third parties to, analyze, copy, reverse engineer or otherwise attempt to determine the structure or sequence of the product.



For full product information, images and publications, please visit our [website](#).

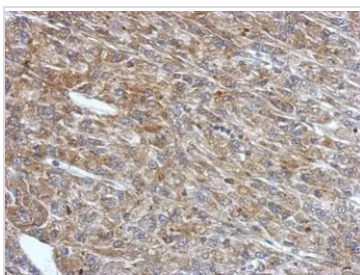
**DATA IMAGES**

**GTX117869 IHC-P Image**

RNF133 antibody detects RNF133 protein at cytoplasm in human endometrial cancer by immunohistochemical analysis.

Sample: Paraffin-embedded human endometrial cancer.

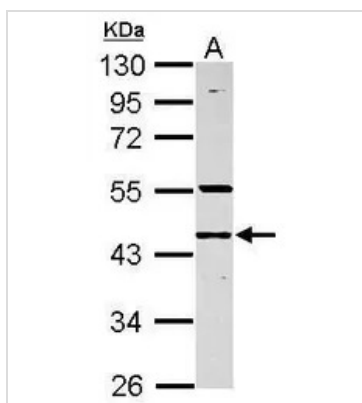
RNF133 antibody (GTX117869) diluted at 1:500.

Antigen Retrieval: Citrate buffer, pH 6.0, 15 min


**GTX117869 IHC-P Image**

Immunohistochemical analysis of paraffin-embedded U87 xenograft, using RNF133(GTX117869) antibody at 1:500 dilution.

Antigen Retrieval: Trilogy™ (EDTA based, pH 8.0) buffer, 15min

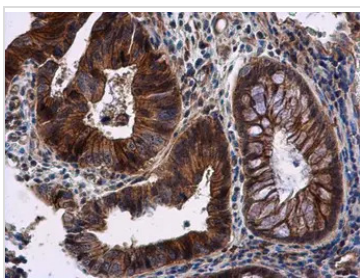

**GTX117869 WB Image**

Sample (30 ug of whole cell lysate)

A: K562

10% SDS PAGE

GTX117869 diluted at 1:1000


**GTX117869 IHC-P Image**

RNF133 antibody detects RNF133 protein at cytoplasm in human colon cancer by immunohistochemical analysis.

Sample: Paraffin-embedded human colon cancer.

RNF133 antibody (GTX117869) diluted at 1:500.

Antigen Retrieval: Citrate buffer, pH 6.0, 15 min



For full product information, images and publications, please visit our [website](http://www.genetex.com).