

## DCXR antibody, C-term

Cat. No. GTX11800

Host	Goat
Clonality	Polyclonal
Isotype	IgG
Applications	WB, IHC-P
Reactivity	Human, Rat

References ( 1 )

Package

100 µg

## Applications

## Application Note

\*Optimal dilutions/concentrations should be determined by the researcher.

Suggested dilution	Recommended dilution
WB	0.1-0.3µg/ml
IHC-P	1-2µg/ml

**Note : Human kidney, stains membrane / cytoplasm in epithelial cells of renal glomeruli and tubules.**

Not tested in other applications.

**Calculated MW** 26 kDa. ( [Note](#) )

## Properties

Form	Liquid
Buffer	TBS, 0.5% BSA
Preservative	0.02% Sodium azide
Storage	Store as concentrated solution. Centrifuge briefly prior to opening vial. For short-term storage (1-2 weeks), store at 4°C. For long-term storage, aliquot and store at -20°C or below. Avoid multiple freeze-thaw cycles.
Concentration	0.50 mg/ml (Please refer to the vial label for the specific concentration.)
Immunogen	Peptide with sequence GSTLPVEGGFWAC, from the C Terminus of the protein sequence according to NP_057370.1.
Purification	Purified by ammonium sulphate precipitation followed by antigen affinity chromatography
Conjugation	Unconjugated

## Note

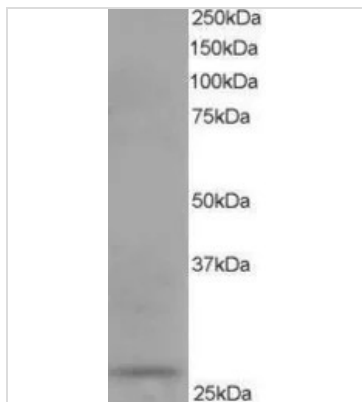
For laboratory research use only. Not for any clinical, therapeutic, or diagnostic use in humans or animals. Not for animal or human consumption.

Purchasers shall not, and agree not to enable third parties to, analyze, copy, reverse engineer or otherwise attempt to determine the structure or sequence of the product.



For full product information, images and publications, please visit our [website](#).

## DATA IMAGES

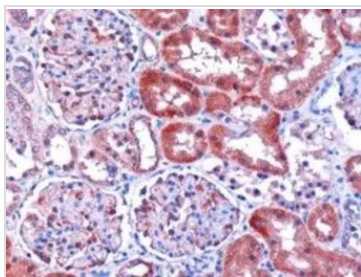


### GTX11800 WB Image

WB analysis of human kidney lysate using GTX11800 DCXR antibody, C-term.

Dilution : 0.1µg/ml

Loading : 35µg protein in RIPA buffer



### GTX11800 IHC-P Image

IHC-P analysis of human kidney using GTX11800 DCXR antibody, C-term.

Antigen retrieval : citrate buffer pH 6

Dilution : 1µg/ml



For full product information, images and publications, please visit our [website](#).