

DCTN1 antibody, C-term

Cat. No. GTX11806

Host	Goat
Clonality	Polyclonal
Isotype	IgG
Applications	WB, ICC/IF, IHC-P, FCM
Reactivity	Human, Mouse

Package
100 µg

Applications

Application Note

*Optimal dilutions/concentrations should be determined by the researcher.

Suggested dilution	Recommended dilution
WB	1-2µg/ml
ICC/IF	10µg/ml
IHC-P	2-4µg/ml
FCM	10µg/ml

**Note : Strong expression of the protein seen in the cytoplasm of HeLa and U2OS cells.
Human Cerebellum shows pixulate staining of cytoplasm in neuronal cells.**

Not tested in other applications.

Calculated MW 142 kDa. ([Note](#))

Product Note This antibody is expected to recognise all reported isoforms.

Properties

Form	Liquid
Buffer	TBS, 0.5% BSA
Preservative	0.02% Sodium azide
Storage	Store as concentrated solution. Centrifuge briefly prior to opening vial. For short-term storage (1-2 weeks), store at 4°C. For long-term storage, aliquot and store at -20°C or below. Avoid multiple freeze-thaw cycles.
Concentration	0.50 mg/ml (Please refer to the vial label for the specific concentration.)
Immunogen	Peptide with sequence C-QEQLHQLHSRLIS, from the C Terminus of the protein sequence according to NP_004073.2; NP_075408.1; NP_001128512.1; NP_001128513.1; NP_001177765.1; NP_001177766.1.
Purification	Purified by ammonium sulphate precipitation followed by antigen affinity chromatography
Conjugation	Unconjugated



For full product information, images and publications, please visit our [website](#).

For laboratory research use only. Not for any clinical, therapeutic, or diagnostic use in humans or animals. Not for animal or human consumption.

Note

Purchasers shall not, and agree not to enable third parties to, analyze, copy, reverse engineer or otherwise attempt to determine the structure or sequence of the product.

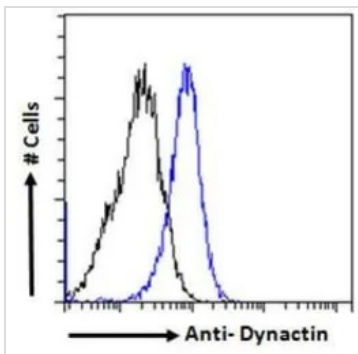
DATA IMAGES

GTX11806 WB Image

WB analysis of human cerebellum lysate using GTX11806 DCTN1 antibody, C-term.

Dilution : 1µg/ml

Loading : 35µg protein in RIPA buffer


GTX11806 FCM Image

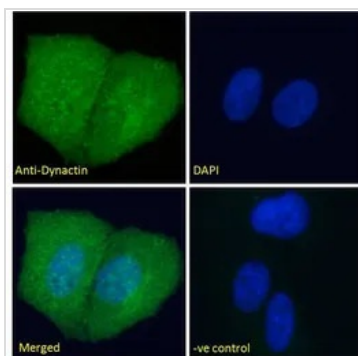
FACS analysis of PFA fixed HeLa cells using GTX11806 DCTN1 antibody, C-term.

Blue : Primary antibody

Black : Isotype control

Permeabilization : 0.5% Triton

Dilution : 10µg/ml


GTX11806 ICC/IF Image

ICC/IF analysis of PFA fixed U2OS cells using GTX11806 DCTN1 antibody, C-term.

Green : Primary antibody

Blue : DAPI

Negative control : Unimmunized goat IgG

Permeabilization : 0.15% Triton

Dilution : 10µg/ml



For full product information, images and publications, please visit our [website](https://www.genetex.com).