

Annexin III antibody

Cat. No. GTX11808

Host	Rabbit
Clonality	Polyclonal
Isotype	IgG
Application	WB, IHC-P
Reactivity	Human, Mouse, Rat

Package
100 µg

APPLICATION

Application Note

*Optimal dilutions/concentrations should be determined by the researcher.

Suggested dilution	Recommended dilution
WB	0.1-0.5µg/ml
IHC-P	0.5-1µg/ml

Not tested in other applications.

Calculated MW 36 kDa. ([Note](#))

PROPERTIES

Form	Liquid
Buffer	0.1% Na ₂ HPO ₄ , 0.45% NaCl, 2.5% BSA
Preservative	0.025% Thimerosal, 0.025% Sodium azide
Storage	Store as concentrated solution. Centrifuge briefly prior to opening vial. For short-term storage (1-2 weeks), store at 4°C. For long-term storage, aliquot and store at -20°C or below. Avoid multiple freeze-thaw cycles.
Concentration	500 µg/ml (Please refer to the vial label for the specific concentration.)
Immunogen	A synthetic peptide corresponding to a sequence in the middle region of rat Annexin A3(124-141aa RQMKEISQAYYTAYKKNL), different from the related human and mouse sequences by two amino acids.
Purification	Purified by antigen-affinity chromatography
Conjugation	Unconjugated

Note

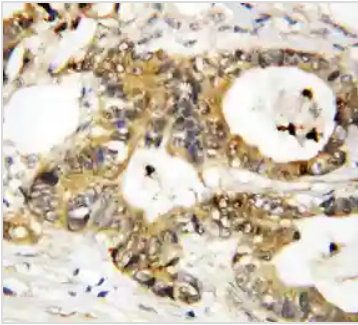
For laboratory research use only. Not for any clinical, therapeutic, or diagnostic use in humans or animals. Not for animal or human consumption.

Purchasers shall not, and agree not to enable third parties to, analyze, copy, reverse engineer or otherwise attempt to determine the structure or sequence of the product.



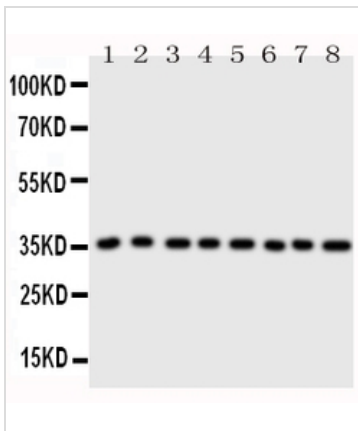
For full product information, images and publications, please visit our [website](#).

DATA IMAGES



GTX11808 IHC-P Image

IHC-P analysis of human mammary cancer tissue using GTX11808 Annexin III antibody.



GTX11808 WB Image

WB analysis of various samples using GTX11808 Annexin III antibody.

Lane 1 : rat brain tissue lysate at 50ug

Lane 2 : rat testis tissue lysate at 50ug

Lane 3 : rat skeletal muscle tissue lysate at 50ug

Lane 4 : rat lung tissue lysate at 50ug

Lane 5 : SW620 whole cell lysate at 40ug

Lane 6 : HeLa whole cell lysate at 40ug

Lane 7 : SMMC whole cell lysate at 40ug

Lane 8 : MCF-7 whole cell lysate at 40ug

Dilution : 0.5 µg/mL



For full product information, images and publications, please visit our [website](https://www.genetex.com).