

Kaiso antibody [2T15]

Cat. No. GTX11810

Host	Mouse
Clonality	Monoclonal
Isotype	IgG1
Applications	WB, ICC/IF, IP, Gel supershift assays
Reactivity	Human, Mouse, Rat, Dog, Hamster, Chicken

Package

50 µg

Applications

Application Note

*Optimal dilutions/concentrations should be determined by the researcher.

Suggested dilution	Recommended dilution
WB	0.5-2µg/ml
ICC/IF	1µg/ml
IP	2-5µg
Gel supershift assays	Assay dependent

Note : fixed with 100% methanol
Supershifts a specific methyl-CpG complex.

Not tested in other applications.

Calculated MW 74 kDa. ([Note](#))

Properties

Form	Liquid
Buffer	Tris-Glycine
Preservative	0.05% Sodium azide
Storage	Store as concentrated solution. Centrifuge briefly prior to opening vial. For short-term storage (1-2 weeks), store at 4°C. For long-term storage, aliquot and store at -20°C or below. Avoid multiple freeze-thaw cycles.
Concentration	Batch dependent (Please refer to the vial label for the specific concentration.)
Immunogen	Recombinant N-terminal GST and His-tagged fusion protein corresponding to aa103-584 at the central region of mouse Kaiso.
Purification	Protein G purified
Conjugation	Unconjugated



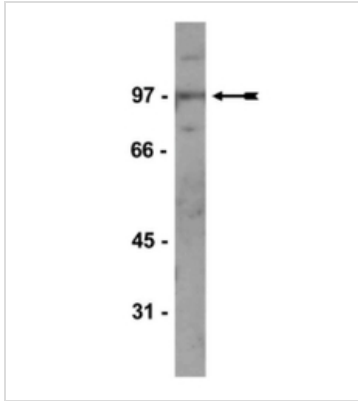
For full product information, images and publications, please visit our [website](#).

For laboratory research use only. Not for any clinical, therapeutic, or diagnostic use in humans or animals. Not for animal or human consumption.

Note

Purchasers shall not, and agree not to enable third parties to, analyze, copy, reverse engineer or otherwise attempt to determine the structure or sequence of the product.

DATA IMAGES

**GTX11810 WB Image**

WB analysis of 3T3/A31 cell lysate using GTX11810 Kaiso antibody [2T15].

Dilution : 2µg/ml



For full product information, images and publications, please visit our [website](#).