

EIF4G3 antibody [N1], N-term

Cat. No. GTX118109

Host	Rabbit
Clonality	Polyclonal
Isotype	IgG
Applications	WB, ICC/IF, IHC-P, IHC-Fr, IP
Reactivity	Human, Mouse, Rat

References (5)

Package

100 µl, 25 µl

Applications

Application Note

*Optimal dilutions/concentrations should be determined by the researcher.

Suggested dilution	Recommended dilution
WB	1:500-1:20000
ICC/IF	1:100-1:1000
IHC-P	1:100-1:1000
IHC-Fr	1:100-1:1000
IP	1:100-1:500

Not tested in other applications.

Calculated MW 177 kDa. ([Note](#))

Properties

Form	Liquid
Buffer	PBS, 1% BSA, 20% Glycerol
Preservative	0.025% ProClin 300
Storage	Store as concentrated solution. Centrifuge briefly prior to opening vial. For short-term storage (1-2 weeks), store at 4°C. For long-term storage, aliquot and store at -20°C or below. Avoid multiple freeze-thaw cycles.
Concentration	0.26 mg/ml (Please refer to the vial label for the specific concentration.)
Immunogen	Recombinant protein encompassing a sequence within the center region of human EIF4G3. The exact sequence is proprietary.
Purification	Purified by antigen-affinity chromatography.
Conjugation	Unconjugated



For full product information, images and publications, please visit our [website](#).

For laboratory research use only. Not for any clinical, therapeutic, or diagnostic use in humans or animals. Not for animal or human consumption.

Note

Purchasers shall not, and agree not to enable third parties to, analyze, copy, reverse engineer or otherwise attempt to determine the structure or sequence of the product.

DATA IMAGES

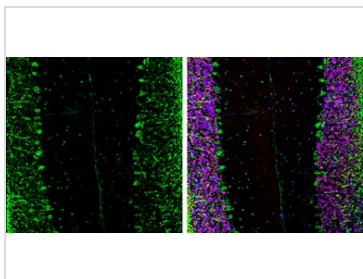
GTx118109 IHC-P Image

EIF4G3 antibody [N1], N-term detects EIF4G3 protein at cytosol on mouse cervix by immunohistochemical analysis.

Sample: Paraffin-embedded mouse cervix.

EIF4G3 antibody [N1], N-term (GTx118109) dilution: 1:500.

Antigen Retrieval: Trilogy™ (EDTA based, pH 8.0) buffer, 15min


GTx118109 IHC-Fr Image

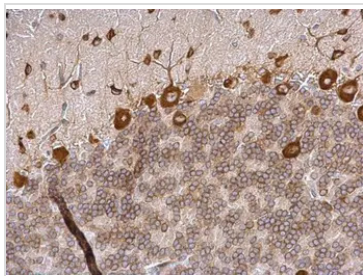
EIF4G3 antibody [N1], N-term detects EIF4G3 protein expression by immunohistochemical analysis.

Sample: Frozen-sectioned adult mouse cerebellum.

Green: EIF4G3 protein stained by EIF4G3 antibody [N1], N-term (GTx118109) diluted at 1:250.

Red: NeuN, stained by NeuN antibody [2Q158] (GTx30773) diluted at 1:500.

Blue: Fluoroshield with DAPI (GTx30920).

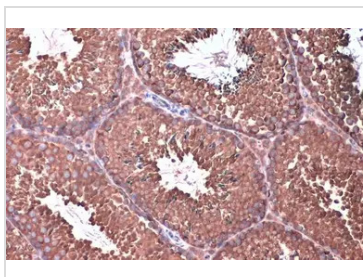

GTx118109 IHC-P Image

EIF4G3 antibody [N1], N-term detects EIF4G3 protein at cytosol on rat hind brain by immunohistochemical analysis.

Sample: Paraffin-embedded rat hind brain.

EIF4G3 antibody [N1], N-term (GTx118109) dilution: 1:500.

Antigen Retrieval: Trilogy™ (EDTA based, pH 8.0) buffer, 15min


GTx118109 IHC-P Image

EIF4G3 antibody [N1], N-term detects EIF4G3 protein at cytoplasm by immunohistochemical analysis.

Sample: Paraffin-embedded mouse testis.

EIF4G3 stained by EIF4G3 antibody [N1], N-term (GTx118109) diluted at 1:500.

Antigen Retrieval: Citrate buffer, pH 6.0, 15 min



For full product information, images and publications, please visit our [website](https://www.genetex.com).